

ANTARCTICA



Sightseeing FLIGHTS



THE WORLD'S LEADER IN SCENIC FLIGHTS TO ANTARCTICA



Incredible mountain ranges and glaciers



AUSTRALIA IS OFTEN regarded as the great southern land but way south of Australia lies the world's highest, driest, coldest and windiest continent – Antarctica. Uninhabited except for several scientific research stations, this huge continent is twice the size of Australia and abounds with staggering scenery unmatched anywhere else in the world. For 16 years Antarctica Sightseeing Flights (Croydon Travel), in conjunction with Qantas, has taken thousands of passengers on memorable sightseeing flights over Antarctica. We invite you to join us this southern summer for an unforgettable and rare travel experience to this magnificent continent. The flight provides a full day of

Vast ice sheets



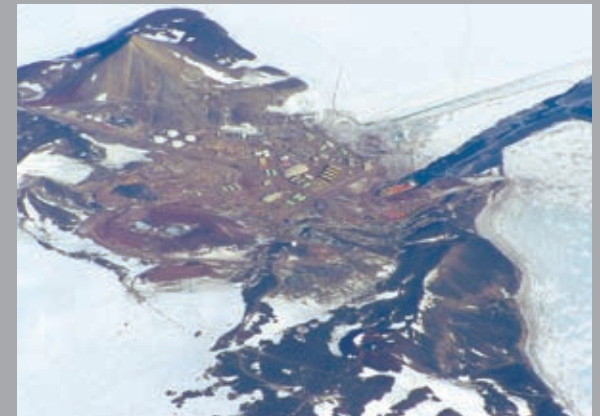
Antarctic experience. Expert Antarctic expeditioners are onboard to talk on the polar environment and history, video screenings depict life on the ground, and a camera on the flight deck gives you a pilot's eye view of magnificent plateaux, vast mountain ranges and expanses of permanent ice. Less than three hours south of Hobart, passengers usually see the first iceberg, followed by dozens more, the amazing Polar Icecap, the South Magnetic Pole, close up views of the French base at Dumont d'Urville and the rugged cliffs of the Antarctic mainland. Qantas has planned 19 different routings to take advantage of the best weather conditions so passengers may have crystal clear views of

Sea of icebergs



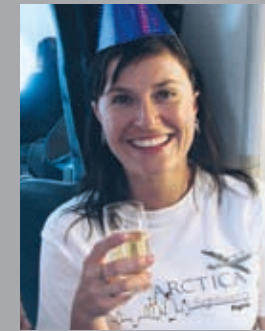
this magnificent landscape. The distance from Sydney to Antarctica and return is 10,160 kms. Flying time is between 11½ and 12½ hours depending on your city of departure. All flights will have approximately 3 to 4 hours flying over the stunning Antarctic region. Some typical points of interest include the South Magnetic Pole, the French Base of Dumont d'Urville, Cape Hudson, Commonwealth Bay, Mawson's Huts, Mertz Glacier, the Transantarctic Range, mountains of Victoria Land, Mt Minto, Mt Melbourne, Cape Washington, Ross Ice Shelf, Admiralty Mountains, Ross Sea and Cape Adare*. Several different seating options are available – First Class, featuring full length sleeper

Majestic plateaux



seats and the opportunity to sit at a window seat for the full time over the ice. Business Class offers several different options, please refer to the seating plans for details. There also are four choices in Economy Class including Qantas' award winning Premium Economy. Once over the Antarctic continent passengers in Economy Class are encouraged to move around the cabin and share in the scenic viewing. The aircraft will fly 'figure 8's' over various points of interest to allow these spectacular sights to be viewed on both sides of the aircraft.

**Depending on prevailing weather conditions the points of interest viewed may vary. Alternative flight paths may enable viewing of other points of interest but clear views cannot be guaranteed.*



PAY BY POINTS OPTION

- ▶ You can purchase an Antarctica Sightseeing Flight with your American Express points. \$100 of travel = 10,000 points. You can use the points for full or partial payment. For example, you can pay for an Economy Class Centre seat with 100,000 points.



LOW CARBON COMMITMENT

- ▶ We work in partnership with Climate Friendly and GreenPower to reduce/offset carbon emissions caused by the electricity used in our office and flights associated staff business travel. You can also help the environment by offsetting the carbon emissions caused by your flight, refer to the Booking Form for details.



INCLUSIONS

- ▶ Incredible sightseeing over Antarctica
- ▶ Full Antarctic experience - Antarctic experts, videos and other informative activities
- ▶ Camera in Flight Deck relaying a bird's eye view throughout screens on the plane
- ▶ Comprehensive information kit
- ▶ Two full service Qantas meals plus in-flight snacks
- ▶ Full bar service - including wine, beer, spirits and soft drink
- ▶ Live jazz band on 31 December flight

FACT FILE

- ▶ Antarctica was once part of the super-continent of Gondwana which broke up millions of years ago to form the separate continents of Antarctica, Australia, Africa, South America and India
- ▶ The Antarctic continent covers an area of approximately 14 million square kilometres and is almost twice the size of Australia
- ▶ Less than 2% of Antarctica is ice-free (exposed rock) and the ice sheet has an average thickness of approximately 2.4 kilometres
- ▶ During winter the pack-ice zone in the Southern Ocean extends to an area between 19 and 22 million square kilometres - almost doubling in size compared to summer
- ▶ The highest mountain in Antarctica is Vinson Massif (4,897 metres)
- ▶ The total volume of the Antarctic ice sheet is about 30 million cubic kilometres
- ▶ Antarctica contains about 70% of the world's freshwater - if this water (trapped as ice) were to melt the sea level would rise by approximately 70 metres
- ▶ Perhaps surprisingly Antarctica is the world's driest continent - it is often referred to as a 'polar desert' with the annual snowfall equating to around 200mm of water. This is less than the annual rainfall of the world's hot deserts
- ▶ The average coastal temperature in summer is 0° and the coldest temperature ever recorded on earth was in Antarctica: -89.6°C at Vostok station in July 1983
- ▶ The highest wind speed ever recorded was also in Antarctica: 327 kilometres per hour at the French base of Dumont d'Urville in July 1972

SEATING PLAN BOEING 747-400

FIRST CLASS \$6,799

All seats will be full length sleeper seats. First Class passengers have the opportunity to sit next to the window for the full time over the ice.

BUSINESS CLASS DELUXE \$5,499

All seats will be either a window or aisle seat next to the window seat. The window and the adjacent aisle seats will be exchanged at the halfway point of the journey.

BUSINESS CLASS CENTRE \$2,999

These seats are the three seats in the centre row in the downstairs Business Class cabin. Although they do not rotate to a window seat full Business Class facilities, food and drinks are provided.

PREMIUM ECONOMY CLASS \$2,599

These are Qantas' international Premium Economy seats, with slightly larger seats and seat pitch than regular Economy Class seats. The seats are in a 2-4-2 configuration, giving more space in the Economy cabin. Seats are located over the wing. Each passenger will have a window seat or seat next to a window seat for half of the flight and a centre seat for the other half of the flight.

ECONOMY CLASS SUPERIOR \$2,399

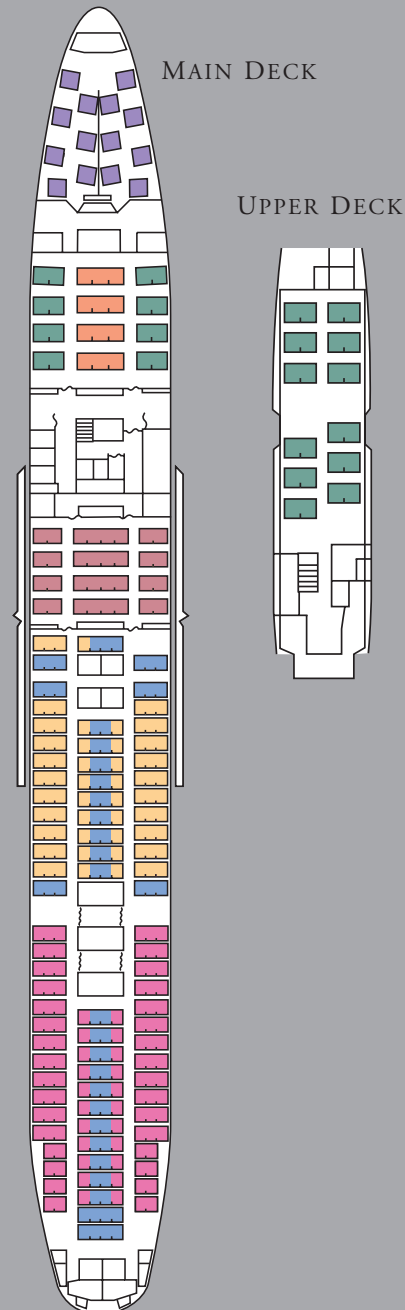
The rear Economy Class section is reserved for Economy Class Superior passengers. All seat rows are well clear of the wing for excellent viewing. Economy Class Superior seats are the four seats on each side of the aircraft and will be exchanged at the halfway point of the journey. Each passenger will have a window seat or the seat next to a window seat for half of the flight and an aisle seat for the other half of the flight.

ECONOMY CLASS STANDARD \$1,599

These will be the four seats on each side of the aircraft in the Economy Class section over or near the wing area and will be exchanged at the halfway point of the journey. Each passenger will have a window seat or the seat next to a window seat for half of the flight and an aisle seat for the other half of the flight.

ECONOMY CLASS CENTRE \$999

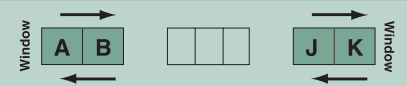
These are the two seats in the middle rows of the Economy Class section (seats E, F). Centre seats do not rotate.



SEAT EXCHANGE - FIRST CLASS

Qantas' luxurious First Class layout allows for excellent Antarctic viewing. For seat rotation details, please contact our office.

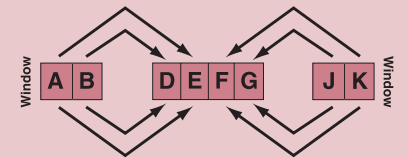
SEAT EXCHANGE - BUSINESS CLASS DELUXE



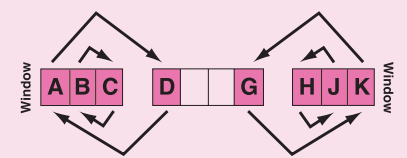
SEATING - BUSINESS CLASS CENTRE



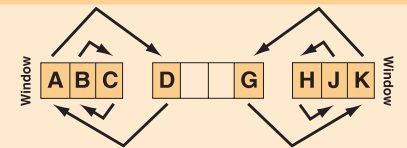
SEAT EXCHANGE - PREMIUM ECONOMY CLASS



SEAT EXCHANGE - ECONOMY CLASS SUPERIOR



SEAT EXCHANGE - ECONOMY CLASS STANDARD



SEATING - ECONOMY CLASS CENTRE



GENERAL TERMS AND CONDITIONS

CHARTER MANAGER Phil Asker Pty. Ltd. (ACN 063 895 876, ABN 82 063 895 876) trading as Antarctica Sightseeing Flights/Croydon Travel, Level 1, 35 Seymour Street, Ringwood, Victoria 3134 Australia, is the Charter Manager.

CHARTER AIRLINE Qantas Airways Limited has been contracted as the Charter Airline. However, Qantas is not involved in the organisation of the tour.

RESERVATIONS may be made with Antarctica Sightseeing Flights and Licensed Travel Agents. Antarctica Sightseeing Flights, Level 1, 35 Seymour Street, Ringwood, Victoria 3134 Australia. Freecall: 1800 633 449. Int. Phone: 61 3 8814 5701. Int. Fax: 61 3 8814 5799. Travel Agents Licence Number: 31891.

YOUR FLIGHT CONTRACT is with Phil Asker Pty. Ltd. We have made every effort to ensure that accommodation, ground transportation, airlines, meals, beverages, photographs, pricing and all other services will be as represented in this brochure. Please note that we cannot be responsible for the act or omissions of suppliers or services, or for any representation made by suppliers or third parties. The services are subject to the conditions imposed by the suppliers and their liability may be limited by their tariffs, conditions of carriage, international conventions and agreements, or customs of their businesses. Therefore, Phil Asker Pty. Ltd. cannot assume responsibility for any claims, losses, damage, costs, or expenses of any nature arising out of injury, accident, or death, loss of or damage to or delay in connection with baggage or other property, delay, inconvenience, upset, disappointment, stress, frustration or loss of employment or loss of holiday time resulting from:

- (1) The act or fault or omission of any party other than Phil Asker Pty Ltd. or its employees.
- (2) The passenger's failure to obtain related documentation. The passenger will not be entitled

to any refund if the passenger fails to follow the instruction of Phil Asker Pty. Ltd. or its representatives. We reserve the right to alter or cancel any services you have purchased and inclusions may vary depending on weather, tour operator arrangements, or other uncertainties, and are subject to change. The photographs appearing in this brochure are representational only and are not a guarantee that everything will be exactly as depicted at the location upon arrival. Whilst every endeavour will be made to adhere to the proposed route, weather conditions may determine the actual route, according to the absolute discretion of the Captain of the aircraft. No guarantee can be given of clear viewing conditions and no refund or part refund will be made if the views are fully or partially obscured. Alternative routes will be selected to give the best viewing if the planned route has unfavourable weather conditions.

GOVERNING RULE The charter proposal set out herein and the participants' acceptance by completion of the registration form creates an agreement between the Charter Manager and the participants subject to the law of the State of Victoria. The registration forms part of this documentation.

UNUSED SERVICES No refunds can be given for unused or partially used services during the charter program.

CANCELLATION FEES As per booking form.

SPECIAL NOTE A Qantas 747-400 or an A380 aircraft will operate all flights, however, other Qantas aircraft may be substituted without notice. Frequent flyer points do not apply.

PHOTOS/VIDEOS Photographs or videos of the flight may be used for promotional purposes. Completion of your Booking Form and acceptance of the documents indicates your acceptance and release for this material to be used for promotional and/or resale purposes.

AIRLINE LEVY Airline fuel and/or security levies may apply.

COMMUNITY PARTNERSHIP



Antarctica Sightseeing Flights is proud to be a benefactor of Clean Up Australia (CUA). Since 1995, more than \$300,000 has been raised to support CUA's mission to inspire and work with all Australians to clean up, fix up and conserve our environment. CUA is the largest community environmental organisation in Australia. The annual Clean Up Australia Day held each March regularly draws more than 700,000 volunteers. With a view to the future, Clean Up is broadening its focus from Clean Up to Fix Up and has more than 80 active projects nationwide representing a successful initiative

to identify longer-term environmental problems and find sustainable solutions. Fix Up projects are community driven, localised and effective. Bringing people together in a fun and educational way, Clean Up Australia is making an important difference today and tomorrow. Anyone wanting to know more about Clean Up Australia, the Day and its projects can visit www.cleanup.org.au. All money raised for CUA by Antarctica Sightseeing Flights is directed to the Clean Up Australia Foundation, established to provide long-term support for Clean Up Australia Projects as well as raise funds in perpetuity to ensure the environment is cared for well into the future.

We thank Rob Quee, David Jenkins, Gordon Hammond and Jason Robertson for their photographs of Antarctica.

ANTARCTICA



Sightseeing

FLIGHTS 2010/11 BOOKING FORM

Please book the following people on the Antarctica Sightseeing Flights:

31 December 2010 (from Syd & Mel) 23 January 2011 (from Syd) 6 February 2011 (from Mel)

I/We will board the flight in: Sydney Melbourne

I/We would like information and costs for connecting air travel from our home port:

(Please insert home port and desired travel dates if connecting flights are required) Departure Date: _____ Return Date: _____
Departure Time: _____ Return Time: _____

I/We would like you to send some information on travel insurance.

I/We would like travel insurance included and have enclosed payment and travel insurance application form.

I/We would like to reduce the impact of the carbon emissions caused by my flight (cost \$95.60 per person).

We at Antarctica Sightseeing Flights are committed to the environment and to managing our operations to ensure a low carbon future. In partnership with Climate Friendly and GreenPower we have offset the effects of carbon emissions caused by our office activity (including staff flights and electricity). We encourage you to consider offsetting your share of carbon emissions from your Antarctica flight. Your \$95.60 offset contribution will be used to invest in renewable energy projects through Carbon Friendly (see www.climatefriendly.com for details).

RESERVATION REQUIREMENTS (full name as per photo identification)

	Title	Given name and surname	Address	P'Code	Home Phone	Class
A						
B						
C						
D						

Special Remarks

(eg. wheelchair assistance, special meals, etc.)

If you would like to receive information about Antarctica Sightseeing Flights via email, please supply your email address:

GENERAL CONDITIONS

(THE CONDITIONS ARE SET OUT IN THE ANTARCTICA BROCHURE – PLEASE READ THEM)

The following declaration must be **signed by all passengers nominated** herein before flight documentation can be finalised.

Tickets will be forwarded approximately 10 days before departure.

ACCEPTANCE OF TERMS & CONDITIONS

I/We agree to abide by the conditions identified in the brochure and on this form.

NAME _____ SIGNATURE _____ DATE ___/___/___

NAME _____ SIGNATURE _____ DATE ___/___/___

NAME _____ SIGNATURE _____ DATE ___/___/___

NAME _____ SIGNATURE _____ DATE ___/___/___

ANTARCTICA



Sightseeing

FLIGHTS 2010/11 BOOKING FORM

FLIGHT TIMETABLE

Flight	Day	Departure	City of Origin	Flight Times	
				Depart	Return
New Year's Eve	Friday	31 December 2010	Sydney/Melbourne	Syd-2:00pm/Melb-5.10pm	Syd-7:40am/Melb-4.40am (next day)
Sightseeing	Sunday	23 January 2011	Sydney	8.00am	8.30pm
Sightseeing	Sunday	6 February 2011	Melbourne	8.40am	8.00pm

(Flight times may be varied for operational reasons. 31/12/10 flight departs from Sydney via Melbourne.)

SEATS & FARES

\$999 Economy Class Centre	Seating in economy rows E & F only (<i>non rotational</i>)
\$1,599 Economy Class Standard	Seating in economy rows A, B, C, D, G, H, J, K over wing (<i>passengers change seats at a nominated halfway point</i>)
\$2,399 Economy Class Superior	Seating in economy rows A, B, C, D, G, H, J, K not over wing (<i>passengers change seats at a nominated halfway point</i>)
\$2,599 Premium Economy Class	Seating in economy rows A, B, D, E, F, G, J, K over wing (<i>passengers change seats at a nominated halfway point</i>)
\$2,999 Business Class Centre	Seats D, E & F in the centre row of the downstairs Business Class cabin (<i>non rotational</i>)
\$5,499 Business Class Deluxe	All seats are window or adjoining window seats (<i>passengers change seats at a nominated halfway point</i>)
\$6,799 First Class	All seats will be full length sleeper seats. First Class passengers rotate but have the opportunity to sit next to the window for the full time over the ice, please enquire

The price includes your airfare from Sydney or Melbourne on applicable date. Price includes full Qantas onboard services (including two meals and complimentary bar service), talks by Antarctica experts, Antarctica video screenings, a comprehensive information kit and GST. Fuel surcharges are not included. Please consider carbon offset option – \$95.60 per person.

PAYMENT

Send To: Antarctica Sightseeing Flights
Level 1, 35 Seymour Street
Ringwood, Victoria 3134

or Fax: (03) 8814 5799
or Email: info@antarcticaflights.com.au

- (please tick)
- I/We enclose our cheque for a deposit of \$300 per person totalling \$ _____
- I/We enclose our cheque for a full payment totalling (*please consider carbon offset option – \$95.60 per person*) \$ _____
- Please charge the below Credit Card for the amount of \$ _____
- Please charge the final balance to my Credit Card on ___/___/___ (*please consider carbon offset option – \$95.60 per person*) .. \$ _____

Mastercard Visa Diners American Express

Card Number

/

Expiry Date

(Clearly print cardholder's name here) _____ Signature _____

PAYMENT CONDITIONS

- Bookings will be held for 7 days. After 7 days a \$300pp deposit and signed booking form are required to confirm your seat.
- Seats will be allocated on a best seat available basis at time of booking. Actual seat numbers will not be confirmed in advance. Seat exchange is compulsory for most seating categories.
- Full and final payment is due eight weeks prior to departure, or on confirmation if your departure date is within eight weeks. If full payment is not received by the due date automatic cancellation may take place.
- The Antarctica fare is non-refundable if cancelled by the passenger within eight weeks of departure but you may transfer your ticket to another person of your choice provided sufficient time is given to Croydon Travel to re-issue the tickets (amendment fees apply).
- Amendment/Transfer (Antarctica Flight): A \$100 fee per change will apply to changes of class and/or changes of name.
- Cancellation Fees (Antarctica Fees): If you book and cancel, the following fees will apply:
 - Deposits are non refundable.
 - Final payment is due eight weeks prior to the flight. Payments are non refundable but it may be possible to transfer your Antarctica ticket to another person.
 - TRAVEL INSURANCE IS STRONGLY RECOMMENDED – enquire when booking.
 - Cancellation/amendment fees for connecting flights are at discretion of the airline.
- Receipts are sent out on request only.
- Fuel surcharges may apply and will be advised closer to departure date.

ORIGINAL-KATALOG-ANFORDERUNG

Sehr geehrte Reise-Interessenten. Vielen Dank für Ihr Interesse und den Download eines digitalen Kataloges im pdf-Format aus unserem Programm.

Gerne senden wir Ihnen zusätzlich bei weitergehendem Interesse den entsprechenden vollständigen Original-Katalog als gedruckte Version auf dem Postweg.

Bitte nennen Sie unten den gewünschten Katalog und senden Sie dieses Formular per Post oder Fax an uns zurück.

Bitte senden Sie mir den aktuellen Original-Katalog für folgendes Programm/Schiff:

Bitte senden Sie den ausgewählten Katalog an folgende Adresse:

Vorname + Name:

Telefonnummer

Strasse + Nr.

Faxnummer

PLZ + Wohnort

e-mail-Adresse

Bitte per Post (in Fenster-Umschlag) an:

oder per Fax an 04131-54255

An
POLARADVENTURES
c/o Agentur für Erlebnis-Reisen
Heinrich-Böll-Str. 40

D-21335 Lüneburg

**Individuelle Buchungsanfrage per Fax an 04131-54255 oder per Post an
Polaradventures, Heinrich-Böll-Str. 40, D-21335 Lüneburg, Germany**

Bitte unterbreiten Sie mir ein unverbindliches Angebot für folgende Leistungen:

- Angebot mit Insolvenzversicherung nach deutschem Reiseveranstalterrecht + Preis in EUR
 Direkt-Angebot der ausländischen Reedereien (ausländ. Reiserecht + Preis in USD zum Tageskurs in EUR)

Schiffsname

Reisename/ -Route

Abfahrt von - bis (tt/mm - tt/mm/jj)

Alternative Abfahrt (tt/mm - tt/mm/jj)
(falls ausgebucht)

Kabinenkategorie

Alternative Kabinenkategorie
(falls ausgebucht)

- Doppelkabine Doppelkabine zur Einzelnutzung Halbe Doppelkabine zur Mitbenutzung

Zubringerflüge:

Abflughafen

Hinflugdatum (tt/mm/jj)

Rückflugdatum (tt/mm/jj)

bevorzugte Airline

- Economy-Class Business-Class

Zusätzliche Hotelübernachtungen:

Hotelname/Übernachtungsort

Aufenthalt von - bis (tt/mm - tt/mm/jj)

Hotelname/Übernachtungsort

Aufenthalt von - bis (tt/mm - tt/mm/jj)

Reiseversicherungen:

- keine
 Reiserücktrittskostenversicherung
 Komplettschutz (Reiserücktritts-, Kranken-, Unfall-, Gepäck- und Notfallversicherung)

Persönliche Angaben:

1. Reiseteilnehmer
Vorname, Name / Geburtsdatum

2. Reiseteilnehmer
Vorname, Name / Geburtsdatum

Angebot bitte:

per Email an (Emailadresse)

per Fax an (Nummer)

per Post an (Vorname & Name)
(Straße & Nr.)

(PLZ & Wohnort)