

# **INDIVIDUELLE ARRANGEMENTS**

**Nur Kreuzfahrt ab/bis Hafen**

## Polar Diving in Antarctica

For our dive and photography expeditions to Antarctica we have chartered ice-strengthened polar vessels well suited to our purpose. Our mission is the exploration of Antarctica's underwater environment, a truly unique experience for the advanced diver. You will see amazing ice formations and marine life seemingly from another planet, such as the Giant Isopods and salps. Seals race fearlessly by, graceful in a way not possible above the surface. Sunlight from above creates a stunning, ever-changing spectrum of color among the diverse benthos. Take your time to explore an environment few divers have ever experienced: the kelp walls, sea snails, crabs, sea butterflies, Shrubby horsetails, jellyfish, squid, Sea hedgehogs, starfish, krill and various Antarctic fish.

The waters of the Southern Ocean also support an economically important world fishery of fin fish, squid and krill, and the waters of the Southern Ocean affect all other world oceans.



## Dive operation

The dive operations managed by the Waterproof Expedition team, relies on more than 15 years of experiences in Polar diving and is organized by polar dive experts who have experienced many extreme situations in the field and who are trained to search out the best opportunities for diving, taking into account the unpredictable weather and ice conditions. We maintain the highest level of safety in combination with quality diving.

We don't dive through a wide hole in the ice (no ice diving!), but in a controlled environment around small grounded icebergs, from the shore or a zodiac or an ice shell.

Trip Itineraries are a guideline. We will always try to hold to the itinerary as much as possible, but SAFETY is number one. Since this is an expedition to a remote part of the world, unpredictable weather conditions, availability of anchorages, wind conditions, and other factors beyond our control will always dictate when it's safe to make a dive.

## Waterproof Expeditions Dive Container

Because the Polar expedition vessels are not specifically built for diving we have designed a special Waterproof Expeditions Dive Container that we bring on board. This provides comfortable storing space in boxes for your gear, and a heating system to dry your suit and BC. No hassle to bring your suits and gear into your cabin or inside the ship.



Although the diving you will be doing while in the Polar Regions is not really considered "technical" in professional diving terminology, the conditions and gear required to dive safely do require a fair bit of experience and training.

Since diving is an equipment intensive activity, diving in Polar Regions requires an extensive amount of additional equipment because of the cold weather and water, and a higher level of diving experience because of the remote location involved. You will find more detailed information on [Polar Diving Procedures](#) in our section Travel Resources. Diving is no fun if you are cold and uncomfortable. Divers in cold water may have a higher air consumption rate, expend more energy, and can become more fatigued. Cold water also decreases a diver's ability to perform complex tasks that require manual dexterity.



## Equipment

It is therefore extremely important that you, prior to coming on the trip, have acquired all the appropriate equipment needed for diving in Polar Regions, and that adequate training and experience is gained in the use of new and unfamiliar equipment. In order to avoid any unnecessary problems you should complete several dives with all the equipment you intend to use, prior to your voyage.

For further details on what to bring for your dive expedition, please check out the section on [Diving Equipment](#), or contact our office for more details.



## Expedition Programme For Divers and NON- Divers

For non-divers we always have a zodiac ready for those explorers who do not wish to dive, but who like to go for a long hike or take their time for topside photography.

Large Zodiacs with powerful outboard motors will usually be the boat of choice to transport divers and non-divers comfortably to their intended destinations and to get closer to nature and wildlife.



# Antarctica Dive & Photography Expeditions

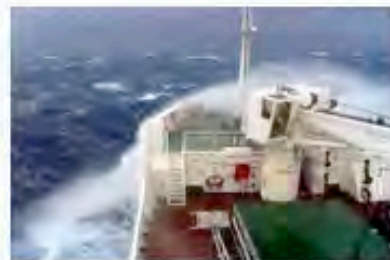
[Detailed Description](#) [Schedules & Rates](#) [Ship Info](#)

more itineraries...

Antarctica Dive & Photography Expeditions

We advise you to arrive one day before departure to arrive in Ushuaia, Tierra del Fuego, Argentina. This will help you to acclimatize to time difference and relax after your long flight from Buenos Aires, Argentina, or Santiago, Chile. Ushuaia is the Southernmost city in the world located in the shadow of the Andes, right at the Beagle Channel shore, one of world's most stunning locations. Expect wonderful views of the Beagle Channel, and the peaks of the Five Brothers from the airplane on its descent. The airport in Ushuaia is small. Taxicabs are easy to find for the transfer to your hotel. Your hotel is not far from the airport and the taxi fare is reasonable.

Please contact us for assistance with your flight and hotel arrangements.

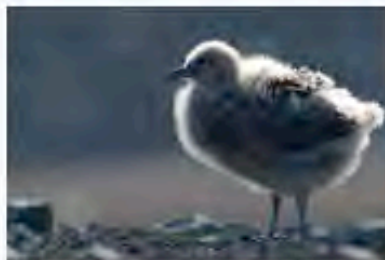


## Day 1

In late afternoon you make your way to the pier in Ushuaia to board the ship. Have your identification on hand, because you must pass through security.

Our staff on board will assist to find your cabin and where to store your dive gear. Take only your regulator with you in your cabin. Every diver is expected to prepare his own equipment well in advance prior to each dive. Bring your own spare parts for your regulators and dry suit in case of leakage or damage.

When the Argentine authorities complete immigration, customs and other procedures, the sailing through the scenic waterway of the Beagle Channel begins.



## Day 2 & 3

During these two days we sail across the Drake Passage. When we cross the Antarctic Convergence, we arrive in the circum-Antarctic upwelling zone. The Drake Passage is notorious for high winds and rolling seas. Traversing the Drake is as much a part of the Antarctic experience as penguins and krill. With the right weather conditions your passage will be relatively easy. After breakfast, the education program commences with a presentation that could be about seabirds of the Southern Ocean. In this area we may see Wandering Albatrosses, Grey Headed Albatrosses, Black-browed Albatrosses, Light-mantled Sooty Albatrosses, Cape Pigeons, Southern Fulmars, Wilson's Storm Petrels, Blue Petrels and Antarctic Petrels. Near the South Shetland Islands, we glimpse at the first icebergs.

If the winds are favourable we might do our first landing in Antarctic waters in the evening of the third day at Aitcho Island or Penguin Island at the South Shetlands.

These volcanic islands are windswept and often shrouded in mist and fog, but do offer subtle pleasures. There is a nice variety of flora (mosses, lichens and flowering grasses) and fauna, such as Gentoo penguins, chinstrap penguins and southern giant petrels.

## Day 4 - 9

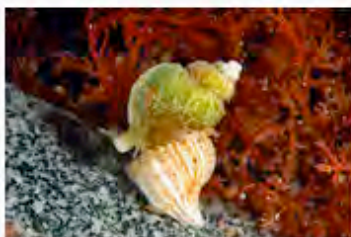
A typical itinerary in the Antarctic Peninsula could be as follows. This is a sample only, the final itinerary will be determined by the Expedition Team and is influenced local conditions, like ice and weather.

We start our first day in Antarctica with a mandatory check-out dive at an easy accessible site to get accustomed to the cold water and adjust your weights. Our dive guides will be with you in the water to assist you with your equipment. Diving in Antarctica is serious stuff and safety is our first priority. Being comfortable in the water with your equipment is essential.

We may make our first landing at Deception Island, a huge volcano of which the crater opens into the sea, creating a natural harbour for the ship. Here we find hot springs, an abandoned whaling station, thousands of Cape Pigeons and many Dominican Gulls, Brown and South Polar Skuas and Antarctic Terns. Wilson's Storm Petrels and Black-bellied Storm Petrels nest in the ruins of the whaling station in Whalers Bay.

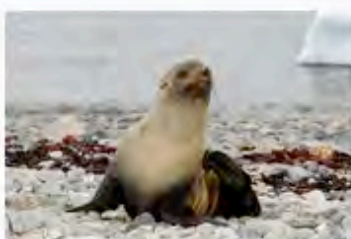


On our way further South we will sail to Cuverville Island, a small precipitous island, nestled between the mountains of the Antarctic Peninsula and Danco Island. It contains a large colony of Gentoo Penguins and breeding pairs of Brown Skuas. In Neko Harbour we will have the opportunity to set foot on the Antarctic Continent in a magnificent landscape of huge glaciers. When sailing to Paradise Bay, with its myriad icebergs and deep cut fjords, we will have the opportunity for zodiac cruising and diving between the icebergs in the inner parts of the fjords. Here we will also have one of the most spectacular wall dives in the Antarctic. The wall drops down to 75m. Thanks to the nearby Shag colony, there is an abundant marine life.



We will sail through the Lemaire Channel, famous for its beautiful scenery and great dive sites, to Pleneau and Petermann Island where we can find Adelie Penguins and Blue-eyed Shags. We will visit one of the scientific stations in Antarctica, Vernadsky, which will give you an insight about the life of modern Antarcticans working on the White Continent. The diving around the station is known to be among the best in the area. Kelp walls and lots of marine life with sponges, anemones, sea-stars, isopods and possibly Antarctic Cod.

Sailing north through Neumayer Channel we arrive at the Melchior Islands with a very beautiful landscape and again possibilities for zodiac cruising among the icebergs, where we may encounter Leopard Seals, Crabeater Seals and whales. In this area we have good chances to see Humpback Whales and Minke Whales.



## Day 9 & 10

On our way back in the Drake Passage we have again a chance of seeing many seabirds and to take advantage of the knowledge of our lecture team. You can count on the education program continuing. Learn more about the seabirds that escort the ship as it crosses the Drake Passage. With the help of the Expedition Team you gain the necessary knowledge to identify birds on the wing. Do not forget to pack your binoculars, they come in handy as you stand watch for whales and albatrosses.

In the morning the ship will arrive in Ushuaia. After a farewell breakfast you will disembark the ship.

# Antarctic Peninsula & the Weddell Sea

[Detailed Description](#) [Schedules & Rates](#) [Ship Info](#)

more trip dates & rates...

This journey to the Antarctic Peninsula will be an unusual and exciting one because our plan is to go exploring in the Weddell Sea. The Erebus and Terror Gulf and the Weddell Sea itself are home to huge tabular icebergs that have split from the Larsen, Ronne and Filchner ice shelves further to the south.

Sometimes these spectacular waterways are choked with ice, creating exciting navigational challenges for our captain and crew. Nestled amongst ice floes of the northern Weddell Sea is the little known Seymour Island. Locked away in its fossil-rich rocks is the story of the disappearance of the dinosaurs and the collapse of the mythical Gondwanaland. One of the aims of this voyage is to explore these fossil beds, as well as to enjoy the wildlife treasure chest of the northern Weddell Sea.

This area of the Peninsula is also rich in exploration history. One of the strangest stories is the saga of Nordenskjöld's Swedish Antarctic Expedition of 1901-04, which was the first expedition to over-winter in the Peninsula.

Our emphasis is on unique wildlife encounters on land as well as in the water, exploring new dive sites and pristine landscapes, visiting sites of historical interest and the occasional visit to scientific stations.

## Day 1 - Embark Ushuaia

Expeditioners and divers will gather in Ushuaia, and have time to explore the bustling community that lays claim to being the world's most southerly town. We advise you to arrive one day before departure to help you to acclimatize to time difference and relax after your long flight from Buenos Aires, Argentina, or Santiago, Chile. Expect wonderful views of the Beagle Channel, and the peaks of the Five Brothers from the airplane on its descent. The airport in Ushuaia is small. Taxicabs are easy to find for the transfer to your hotel. Your hotel is not far from the airport and the taxi fare is reasonable.

Please contact us for assistance with your flight and hotel arrangements.

Our competent Russian crew will welcome us aboard Polar Pioneer in the afternoon. Sailing down the Beagle Channel, we will settle into shipboard life and enjoy our first meal on board.



## Days 2 & 3 - At sea

Cape Horn, the most southerly point of the American continent, has stimulated the imagination of mankind since Sir Francis Drake inadvertently rounded it back in 1580.

Some of us will approach this historic crossing with more than a little trepidation. But despite its reputation, there are many times when the Drake Passage resembles a lake, with lazy Southern Ocean swells rolling under the keel. On the other hand, we sometimes encounter rough crossings with large waves. The size of the waves and the force of the gale will take on gigantic proportions when related around the fire back home.

Polar Pioneer is not a luxury ship, she is homely and strong, built to be a research vessel and refitted to comfortable passenger standard in 2001. The mood on board is definitely casual. At sea we are totally self-sufficient. The days flow by as we travel snugly in our cocoon. A favourite pastime on board is to stand at the stern watching the many seabirds, including majestic albatrosses and giant petrels following in our wake. They rise and fall skilfully, using air currents created by the ship to gain momentum.

During our Drake crossing, we will commence our lecture program about the wildlife, geology, history and geography of the Antarctic Peninsula. Nearing the tip of the Peninsula towards the end of day three, excitement reaches fever pitch with everyone on the bridge watching for our first iceberg. The ocean takes on a whole new perspective once we are below the Antarctic Convergence and are surrounded by the surreal presence of floating ice sculptures. The memory of your first big iceberg sighting is likely to remain with you forever.



## Days 4 -7 – Weddell Sea

Depending on the weather, we will first approach Antarctica to the north of King George Island or in narrow channels between the South Shetland Islands. From there we will head through Antarctic Sound to the eastern side of the Peninsula.

A host of choices is now open to us and depending on the ice and weather conditions the western side of the Antarctic Peninsula is ours to explore. Our experienced leaders, who have made countless journeys to this area, will use this expertise to design our voyage from day to day. This allows us to make best use of the prevailing weather and ice conditions and wildlife opportunities. Because we are so far south, we will experience approximately 18-20 hours' daylight and the days will be as busy as you wish.

Once we arrive in the calmer waters of Antarctic Sound, we start our first day in Antarctica with a mandatory check-out dive at an easy accessible site to get accustomed to the cold water and adjust your weights. Our dive guides will be with you in the water to assist you with your equipment. Diving in Antarctica is serious stuff and safety is our first priority. Being comfortable in the water with your equipment is essential.

Our experienced leaders, who have made countless journeys to this area, will use this expertise to design our voyage from day to day. This allows us to make best use of the prevailing weather and ice conditions and wildlife opportunities. Because we are so far south, we will experience approximately 18-20 hours' daylight and the days will be as busy as you wish. There is plenty of time for sleep when you get home!

The final itinerary will be determined by the Expedition Team and is influenced local conditions, like ice and weather.

Places we may visit around the Weddell Sea area and on the eastern side of the Antarctic Peninsula are:

Brown Bluff, Paulet Island, Devil Island, Joinville Island, D'Urville Island and a large variety of other surprises.



## Days 8 & 9 – West side of the Antarctic Peninsula

On our way further South West we will sail to Cuverville Island, a small precipitous island, nestled between the mountains of the Antarctic Peninsula and Danco Island. It contains a large colony of Gentoo Penguins and breeding pairs of Brown Skuas. In Neko Harbour we will have the opportunity to set foot on the Antarctic Continent in a magnificent landscape of huge glaciers.

When sailing to Paradise Bay, with its myriad icebergs and deep cut fjords, we will have the opportunity for zodiac cruising and diving between the icebergs in the inner parts of the fjords. Here we will also have one of the most spectacular wall dives in the Antarctic. The wall drops down to 75m. Thanks to the nearby Shag colony, there is an abundant marine life.

We might sail through the Lemaire Channel, famous for its beautiful scenery and great dive sites, to Pleneau and Petermann Island where we can find Adelie Penguins and Blue-eyed Shags. Sailing north through Neumayer Channel we arrive at the Melchior Islands with a very beautiful landscape and again possibilities for zodiac cruising among the icebergs, where we may encounter Leopard Seals, Crabeater Seals and whales. In this area we have good chances to see Humpback Whales and Minke Whales.



## Days 10 and 11 - At sea

Time to head back to Tierra del Fuego, with lectures and videos to complete our Antarctic education. This is a time for reflection and discussion about what we have seen and felt, and the impact this voyage has had on our attitude to life. As we approach the tip of South America, our Captain may sail close to legendary Cape Horn, weather conditions permitting.

## Day 12 - Beagle Channel

During the early morning we cruise up the Beagle Channel, before quietly slipping into dock in Ushuaia about 0700. As soon as customs have cleared the ship we will be free to disembark. It's a busy time, with people saying farewell to our crew and to fellow passengers who have shared the intensity of exploring this magnificent white wilderness. We head off in our different directions, hopefully with a newfound sense of the immense power of nature.

# South Georgia & Antarctic Peninsula

[Detailed Description](#) [Schedules & Rates](#) [Ship Info](#)

more trip dates & rates...

The combination of the Sub Antarctic Islands and the Antarctic Peninsula makes this voyage an expedition full of exciting highlights. To us, South Georgia is one of the most beautiful places in the world. With albatrosses and thousands of King Penguins, fur seals and historic sites, including Shackleton's last resting place. Narrow sheltered waterways and fjords. Spectacular mountains rising directly from the sea, icebergs and active glaciers. And the Antarctic Peninsula, the most accessible and wildlife-rich part of Antarctica - penguins, whales seals, sea birds Active scientific stations. A great variety of terrain over short distances.

## Day 1

Today we board our flight in Santiago. On arrival to Port Stanley passengers will be transferred to the group hotel.

## Day 2

Today we will be taken on a tour of Port Stanley. The Falklands capital, features an excellent war museum, welcoming shops and pubs. After our tour we will be transferred to the port in the late afternoon and board our ship, Polar Pioneer.

## Day 3

Today we aim to visit some of the southern, most isolated islands in the Falklands. Between the penguins' nests are gentle black-browed albatross sitting serenely upon beautifully molded mud nests. The air is filled with soaring albatross, turkey vultures, skuas and many species of sea birds.



## Day 4

Cruising towards the South Georgia we resume our lecture programme and we share our experiences of the Falkland Islands. Between the Falklands and South Georgia you will be entranced by the ceaseless flight of the many seabirds that follow our wake. You may decide to join the whale watchers on the bridge, or just relax and read a favourite book. If time and weather conditions permit we could pass close to Shag Rocks, a fascinating group of jagged rocky islets protruding from the sea. Blue-eyed cormorants fill the air; their precarious nesting sites are white with guano. South Georgia is a tiny speck in the South Atlantic Ocean, located in one of the most desolate parts of our planet. A 3,000-metre mountain range forms the spine of this long, narrow island. Between the mountains, shattered glaciers carve their way through tussock grass to the deeply indented coastline.

## Day 5 - 8

Our South Georgia landings are mostly along the northeast coast. We'll see: the world's largest king penguin rookeries, wandering albatross on nests, beaches of elephant and fur seals, macaroni and rockhopper penguin colonies, walking Shackleton's route from Fortuna Bay to Stromness; and visiting Grytviken's whaling museum; Originally a Norwegian sealing and whaling station, it was finally abandoned in 1965. Here we must be careful to avoid stepping on sleeping elephant seals as we skirt the ruins of factory buildings peering into the past, trying to imagine what it was like when whale processing was in full swing. Abandoned ships lie sunken alongside old wharves, while pitted concrete walls remind us of the more recent Falkland's War, which started here.

Sir Ernest Shackleton died from a heart attack during his final expedition on board the Quest on 6 May 1922. His body was laid to rest at Grytviken and we will make a pilgrimage to visit the cross his men erected in his memory looking out across beautiful Cumberland Bay.



## Day 9

Sailing south, we look out for great whales and possibly our first icebergs!

## Day 10 - 11

If pack ice allows, we go ashore in the dramatic South Orkney Islands, then across whale-rich waters to Elephant Island, hoping to take Zodiacs near Point Wild, where Shackleton's men wintered over.

## Day 12 - 14

After visiting the South Shetlands, we sail overnight down Gerlache Strait, awakening to the thrill of Antarctica! Weather and ice permitting, we'll visit busy penguin rookeries, historic sites and make a continental landing.



## Day 15 - 16

North across Drake Passage, we're treated to graceful displays by prions, petrels and majestic albatross. Once we've rounded Cape Horn, we recap our many experiences with shipboard friends.

## Day 17

In the wee hours we sail up the Beagle Channel to Ushuaia where our next adventure begins.

## M/V Polar Pioneer

Polar Pioneer was built in Finland in 1985 as an ice-strengthened research ship, and for many years she plied the treacherous waters of the USSR's northern coast. In 2000 the ship has been converted for passenger use and ideally suited to expedition cruising in polar areas. It complies with the highest international safety and environmental regulations, as well as the Arctic and Antarctic shipping guidelines.

A combined bar/lounge/library area (stocked with a good collection of polar books) was also created by simple internal restructuring. The spacious bridge is always open to us and the decks are ideal for viewing.

The ship carries a full complement of Zodiac crafts, for both cruising and landing ashore.

The chefs are international, and the dining room is attended by Russian stewardesses. Sometimes on our voyages the Chef will organize a Polar barbecue on deck. Surrounded by an impressive landscape and accompanied by your fellow-travellers, staff members and the Russian crew members, this event is one to remember.

This class of vessel has a fine reputation for polar expedition cruising, due to its strength, manoeuvrability and small number of cabins. All cabins have outside portholes plus ample storage space. The Russian captain and crew are among the most experienced ice-navigators in the world and their enthusiasm is legendary.



### Cabins

The passengers are accommodated in twin or superior cabins. All cabins are 'outside' and most cabins have private facilities. All cabins have a desk, chair and windows/portholes that open.

**Twin Private cabin:**

Two lower bunks and a desk, windows. Private bathroom with shower, toilet and washbasin. Cabins 402 & 403 have upper/ower bunks with a desk and a couch.

**Twin Public cabin:**

Two lower bunks, washbasin, desk, couch, ample storage and hanging space, portholes. Showers and toilets are close by and shared with other Main deck cabins.

**Triple cabin:**

Two lower bunks and one upper bunk, washbasin, portholes, ample storage and hanging space, a desk and a couch. Showers and toilets are close by and shared with other Main deck cabins.



Twin Private cabin



Twin Standard cabin

**Suite 501:**

Spacious cabin with double bed ensuite, sofa bed, desk, VCR and tv, refrigerator, coffee and tea maker and windows.

**Superior cabins 502 and 503:**

Cabin with double bed ensuite and one sofa bed, desk, VCR and tv, refrigerator, coffee and tea maker and windows.



Mini Suite



Suite

## Waterproof Expeditions Dive Operation

To facilitate the divers in the best possible way on our expedition vessel, we have designed a special Waterproof Expeditions Dive Container that we bring on board for our dive expeditions. This provides comfortable storing space in boxes for your gear, and a heating system to dry your suit and BC. No hassle to bring your suits and gear into your cabin or inside the ship.



Specially designed dive container



getting dressed for diving

The dive operations managed by the Waterproof Expedition team, relies on more than 15 years of experiences in Polar diving. We have planned and led many field trips to the polar areas, and were the first to lead diving expeditions to the Arctic and Antarctica.

Our knowledge and experiences of the techniques, the gear, the logistics and the polar regions enables us to manage a serious and safe dive operation with a high quality dive product.

The dive operation on board is organized by polar dive guides who have experienced many extreme situations in the field and who are trained to search out the best opportunities for diving, taking into account the unpredictable weather and ice conditions. The main language of the dive operation will be in English.

## Public Areas

The public areas include a dining room which also act as lecture room. There is a cosy bar with reference books and fresh coffee and tea available at all times. The doctor can be visited in the assigned doctors-cabin. The vessel is equipped with a sauna that can hold up to five passengers. The sauna is normally open throughout the day on a self-use basis and not supervised. Passengers use of the facility is of their own volition and at their own risk.

The best viewing places on board for spotting wildlife are the bridge and the open-deck areas. As often as maritime regulations and weather conditions allow, the Bridge is open for visits. This is an excellent place to watch ship operations and maintain a lookout for wildlife. To enable our officers to navigate the ship, we ask that passengers stay clear of the working areas and do not eat or drink.



Restaurant



Bar - Lounge

## Medical Facilities

The vessel is equipped with a medical infirmary with an adequate supply of western medicines and equipment. There will be a Western physician on board. We cannot guarantee to have every drug or piece of equipment for every medical problem. If passengers are under regular treatment for any ailment, they must bring a more than adequate supply of medicines for the duration of their voyage. We cannot accept responsibility for not having a specific brand or type of drug on board. If passengers suffer from any potentially serious illness, they should inform us prior to the voyage so that we can alert the doctor to their condition.

## Communication

The vessel (radio room) is equipped with both direct satellite M phone and facsimile systems. There are also email facilities on board but no access to the internet.

Full details on contacting the ship will be included in passengers' final documents. Although very reliable, the system can be slow and charges for telephone calls are quite expensive. The radio officer answers all incoming calls and receives and distributes any email messages.



Bridge visit



Hot chocolat on deck

## Electrical Current

The electrical supply on board is 220 volts, 50 hertz. The electrical outlet sockets are the standard European two round pin system. Passengers coming from countries with a different system will need to bring a suitable adapter.

There is no shop on board, however, the bartender will have a limited stock of souvenirs (T-shirts, sweatshirts, caps, stuffed animals, films, drugstore items, sweets, etc.) on sale in the bar. Payment for items purchased can be made by cash or added to passengers' shipboard accounts.

## Shop/Souvenirs

### Laundry Service

Laundry service will be available, similar to that of a hotel, provided by the cabin attendants. Laundry request forms and bags will be in each cabin and laundry is collected each morning. Generally it will be returned in 48 hours. A complete laundry list with prices will be provided on board. Ironing services are also available at a minimal charge. There are no facilities for dry cleaning or a self-service laundry.

## Dress on Board

In keeping with our expedition atmosphere, the dress code on board stresses informality. Passengers should plan to bring comfortable, casual clothing for all inside activities.



Polar Barbeque



Great views from the topdeck

## Payment System and gratuities

Upon embarkation, an account will automatically be opened for each passenger for purchases aboard ship. This will include bar services, laundry, communication charges, souvenirs, laundry, etc. An account for payment will be presented on the final day of the voyage.

Final payment can be made using cash, or major credit cards - Visa and MasterCard. All prices are in Euros. Personal checks are NOT accepted on board.

## MY Hanse Explorer

Join our Waterproof Expeditions team on board a unique ship. Strong enough for true dive expeditions in the Polar regions. Elegant enough for tropical diving and cruising in blue Oceans.

A warm welcome amongst cool interiors. Contemporary and chic. Be mesmerised by breathtaking sceneries.

Something special, far beyond the ordinary..

### Lifestyle



Everybody has a different understanding of the word „luxury“ – we think it is just the pure and fantastic feeling of being alive. It is our main goal that you feel at home on board the HANSE EXPLORER. Enjoy a perfect, personal service and don't miss a single thing !

There are no formal obligations, only wellbeing at its best. This means: Spacious cabins and common rooms like a bar and restaurant with selected, exquisite interior and with comfortable materials as well as functional design in the rest of the vessel. The cabins in your "temporary home" are of course equipped with the latest techniques (i. a. Satcom-device for email and fax communication) which allows you to communicate with the rest of the world even in the middle of nowhere.

But luxury are also the simple things that makes life comfortable and pleasant. There is for example a smoking oven so that you can smoke the salmons you caught in the far north right on the spot. There is also a sauna, a fully equiped dive operation and high tech video & photography facilities.

### Our Expedition Team

Whether you chose a unique dive expedition in the Polar Regions or prefer warmer waters, whether you like to cruise with your friends or your photography club, Waterproof Expeditions will take care of your expedition.

With our experienced guides you will visit the best dive sites, make your best shots and have the experience of a life time.

Tell us about your dream destination and preferred itinerary and we will try to accommodate your wishes.

We believe there is only one thing money can't buy: the experience of lifetime.

...its not about the moments you breathe,  
its about the moments that take your breath away..

### Pure comfort



The 158ft./48 m long vessel is built under the supervision of the well-known German classification society "Germanischer Lloyd". It has the highest international safety standard for professional navigation. Certified with ice class GL-E3, the HANSE EXPLORER is able to sail on training trips all around the globe including the polar regions and the Northwest Passage. Safety and comfort rank first.

The vessel has a powerful main motor with approx. 50% power reserve. Should the main motor fail to operate, the vessel will be powered by an electric stand-by motor (400 KW) – a so-called „bring-me-home“-principle! Four generators produce a total electric power capacity of approx. 1.000 kilowatts. Two independently working air conditioning compressors provide a pleasant room temperature in tropic areas whereas in arctic and antarctic waters, there are two independent heating systems generating the necessary heat. Two autarkic fresh water systems (osmosis device/evaporator) provide sufficient fresh water on board.

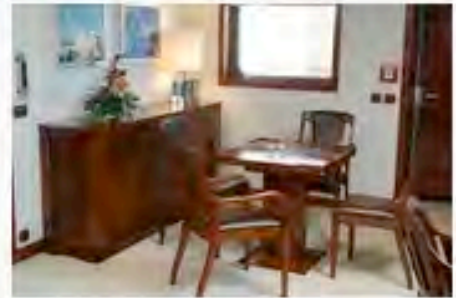
There are also two independent toilet facilities (vacuum/gravity toilet). To protect the environment, we are working with a highly efficient water conditioning system that allows us to cruise even the most sensitive areas of the world.



You will experience everything at close quarters: Our six luxury cabins offer accommodation for up to 12 guests who will certainly encounter a particular kind of adventure. Whether board manoeuvres or fire drill, route planning or vessel management – it goes without saying that you will also be introduced into the true secrets of seafaring and gain an insight into navigation. The vessel bridge is equipped with a comfortable lounge from where you can follow the happenings on our extra guest radar any time. This is of course of special interest for all those who were always interested in nautical technique. Although the vessel is only 158 ft./48 m long, it is equipped with the same latest up-to-date technique the big tank ships and cargo ships all over the world run with. Feel comfortable and enjoy all day long – that's our main goal!

## Feeling at home

"Mi casa es tu casa" – and this is also the motto on our swimming home. You can use everything we have on board. You will not receive an invoice for using the internet nor for the sauna. You should simply feel in good hands and pretend the vessel would be your own. Our promise: You will feel like that anyhow!



## Ships specs

Flag Antigua & Barbuda  
Total length 48 m  
Molded beam 10,40 m  
Dragt 3,52 m  
Displacement 850 t  
Classification GL + 100 A5 E3 'Training Vessel' + MC E3

### Capacities

Fuel 150.000 L  
Fresh water 340.000 L  
Crew & trainees 16 persons  
Expedition staff 2  
Passengers 12

### Engine performance

Speed 13,2 knots  
Cruising radius 5000nm at 12 knots

### Construction

Hull Steel  
Superstructure Steel  
Wheelhouse naval aluminium

### Main drive motors

Propellor Mak Typ 8 M 20, 1.520 kW, 1.000 rpm, variable-pitch propeller  
Bow thrusters 300 kW, 34 kN

### Special features

Ice class E3 according to Germanischer Lloyd, Antirolling system, Shaft generator/Power take home device with 400 kW.

Trip dates & rates Antarctica

# Antarctica Dive & Photography Expeditions

[Detailed Description](#)   [Schedules & Rates](#)   [Ship Info](#)

more trip dates & rates...

Antarctica Dive & Photography Expeditions

04 Feb 2011 15 Feb 2011	<b>Antarctica Dive &amp; Photography Expeditions</b> » <a href="#">M/V Polar Pioneer</a>	Triple Standard cabin 4335 EUR Twin Standard cabin 5395 EUR Twin Private cabin 6160 EUR Mini Suite 6765 EUR Suite 7390 EUR Dive Package 825 EUR » <a href="#">Rates Include/exclude</a> » <a href="#">Terms &amp; Conditions</a>
15 Feb 2011 26 Feb 2011	<b>Antarctica Dive &amp; Photography Expeditions</b> » <a href="#">M/V Polar Pioneer</a>	Triple Standard cabin 4335 EUR Twin Standard cabin 5395 EUR Twin Private cabin 6160 EUR Mini Suite 6765 EUR Suite 7390 EUR Dive Package 825 EUR » <a href="#">Rates Include/exclude</a> » <a href="#">Terms &amp; Conditions</a>
28 Nov 2011 08 Dec 2011	<b>Antarctica Dive &amp; Photography Expeditions</b> » <a href="#">M/V Polar Pioneer</a>	Triple Cabin 4500 EUR Twin Standard Cabin 5285 EUR Twin Private Cabin 5880 EUR Superior Cabin 6510 EUR Suite 7345 EUR Dive package 825 EUR » <a href="#">Rates Include/exclude</a> » <a href="#">Terms &amp; Conditions</a>
08 Dec 2011 19 Dec 2011	<b>Antarctica Dive &amp; Photography Expeditions</b> » <a href="#">M/V Polar Pioneer</a>	Triple Cabin 4685 EUR Twin Standard Cabin 5570 EUR Twin Private Cabin 6305 EUR Superior Cabin 6985 EUR Suite 7740 EUR Dive Package 825 EUR » <a href="#">Rates Include/exclude</a> » <a href="#">Terms &amp; Conditions</a>
19 Dec 2011 28 Dec 2011	<b>Antarctica Dive &amp; Photography Expeditions</b> » <a href="#">M/V Polar Pioneer</a>	Triple Cabin 4500 EUR Twin Standard Cabin 5285 EUR Twin Private Cabin 5880 EUR Superior Cabin 6510 EUR Suite 7345 EUR Dive package 825 EUR » <a href="#">Rates Include/exclude</a> » <a href="#">Terms &amp; Conditions</a>
28 Dec 2011 05 Jan 2012	<b>Antarctica Dive &amp; Photography Expeditions</b> » <a href="#">M/V Polar Pioneer</a>	Triple Cabin 4250 EUR Twin Standard Cabin 4700 EUR Twin Private Cabin 5255 EUR Superior Cabin 5975 EUR Suite 6770 EUR Dive Package 825 EUR » <a href="#">Rates Include/exclude</a> » <a href="#">Terms &amp; Conditions</a>

Trip dates & rates Antarctica

# Antarctic Peninsula & the Weddell Sea

[Detailed Description](#)   **[Schedules & Rates](#)**   [Ship Info](#)

more trip dates & rates...

06 Feb 2012 **Antarctic Peninsula & the Weddell Sea**  
17 Feb 2012 » [M/V Polar Pioneer](#)

Triple Cabin 4880 EUR  
Twin Standard Cabin 5780 EUR  
Twin Private Cabin 6565 EUR  
Superior Cabin 7195 EUR  
Suite 7855 EUR  
Dive Package 825 EUR

» [Rates include/exclude](#)  
» [Terms & Conditions](#)

17 Feb 2012 **Antarctic Peninsula & the Weddell Sea**  
26 Feb 2012 » [M/V Polar Pioneer](#)

Triple Cabin 4880 EUR  
Twin Standard Cabin 5780 EUR  
Twin Private Cabin 6565 EUR  
Superior Cabin 7195 EUR  
Suite 7855 EUR  
Dive Package 825 EUR

» [Rates include/exclude](#)  
» [Terms & Conditions](#)

Trip dates & rates Antarctica

# Antarctica Leopard Seal Special

[Detailed Description](#)   **[Schedules & Rates](#)**   [Ship Info](#)

more trip dates & rates...

17 Feb 2011 **Antarctica Leopard Seal Special**  
04 Feb 2011 » [MY Hanse Explorer](#)

Luxury Double cabin 18500 EUR

» [Rates include/exclude](#)  
» [Terms & Conditions](#)

[back to top](#)

Trip dates & rates Antarctica

# South Georgia & Antarctic Peninsula

[Detailed Description](#)   **[Schedules & Rates](#)**   [Ship Info](#)

more trip dates & rates...

21 Jan 2012 **South Georgia & Antarctic Peninsula**  
06 Feb 2012 » [M/V Polar Pioneer](#)

Triple Cabin 7345 EUR  
Twin Standard Cabin 8550 EUR  
Twin Private Cabin 9945 EUR  
Superior Cabin 10535 EUR  
Suite 11475 EUR  
Dive Package 975 EUR

» [Rates include/exclude](#)  
» [Terms & Conditions](#)

[back to top](#)

## ORIGINAL-KATALOG-ANFORDERUNG

Sehr geehrte Reise-Interessenten. Vielen Dank für Ihr Interesse und den Download eines digitalen Kataloges im pdf-Format aus unserem Programm.

Gerne senden wir Ihnen zusätzlich bei weitergehendem Interesse den entsprechenden vollständigen Original-Katalog als gedruckte Version auf dem Postweg.

Bitte nennen Sie unten den gewünschten Katalog und senden Sie dieses Formular per Post oder Fax an uns zurück.

Bitte senden Sie mir den aktuellen Original-Katalog für folgendes Programm/Schiff:

Bitte senden Sie den ausgewählten Katalog an folgende Adresse:

**Vorname + Name:**

**Telefonnummer**

**Strasse + Nr.**

**Faxnummer**

**PLZ + Wohnort**

**e-mail-Adresse**

Bitte per Post (in Fenster-Umschlag) an:

oder per Fax an 04131-54255

An  
POLARADVENTURES  
c/o Agentur für Erlebnis-Reisen  
Heinrich-Böll-Str. 40  
  
D-21335 Lüneburg

**Individuelle Buchungsanfrage per Fax an 04131-54255 oder per Post an  
Polaradventures, Heinrich-Böll-Str. 40, D-21335 Lüneburg, Germany**

Bitte unterbreiten Sie mir ein unverbindliches Angebot für folgende Leistungen:

- Angebot mit Insolvenzversicherung nach deutschem Reiseveranstalterrecht + Preis in EUR  
 Direkt-Angebot der ausländischen Reedereien (ausländ. Reiserecht + Preis in USD zum Tageskurs in EUR)

Schiffsname

Reisename/ -Route

Abfahrt von - bis (tt/mm - tt/mm/jj)

Alternative Abfahrt (tt/mm - tt/mm/jj) (falls ausgebucht)

Kabinenkategorie

Alternative Kabinenkategorie (falls ausgebucht)

- Doppelkabine  Doppelkabine zur Einzelnutzung  Halbe Doppelkabine zur Mitbenutzung

Zubringerflüge:

Abflughafen

Hinflugdatum (tt/mm/jj)

Rückflugdatum (tt/mm/jj)

bevorzugte Airline

- Economy-Class  Business-Class

Zusätzliche Hotelübernachtungen:

Hotelname/Übernachtungsort

Aufenthalt von - bis (tt/mm - tt/mm/jj)

Hotelname/Übernachtungsort

Aufenthalt von - bis (tt/mm - tt/mm/jj)

Reiseversicherungen:

- keine  
 Reiserücktrittskostenversicherung  
 Komplettschutz (Reiserücktritts-, Kranken-, Unfall-, Gepäck- und Notfallversicherung)

Persönliche Angaben:

1. Reiseteilnehmer  
 Vorname, Name / Geburtsdatum

2. Reiseteilnehmer  
 Vorname, Name / Geburtsdatum

Angebot bitte:

per Email an (Emailadresse)

per Fax an (Nummer)

per Post an (Vorname & Name)  
 (Straße & Nr.)

(PLZ & Wohnort)