

KOMPLETT ARRANGEMENTS

inkl. Fluganreise und Hotels

INDIVIDUELLE ARRANGEMENTS

Nur Kreuzfahrt ab/bis Hafen

Arctic Circumnavigation: Spirit of Place

There's nothing quite like it on Earth – an environment that offers so much more than icebergs, snow and polar bears. The faces of the indigenous peoples tell the story of a place and a way of living that pre-dates civilization and speaks to a deeper connection to the environment, and to each other.

Take advantage of *Kapitan Khlebnikov's* final journey to these remote lands and choose from the full Arctic Circumnavigation; or a segment of it – the Northeast Passage, Greenland Semi-Circumnavigation or Arctic Passage.





*Breathtaking vastness in the Canadian Arctic.
BELOW, LEFT TO RIGHT: A Russian Inuit dressed
to welcome visitors; Mesmerized on the bow;
Tundra flowers make up for their small size
with vibrant color; Musk oxen produce the
finest wool in the world – qiviut.*

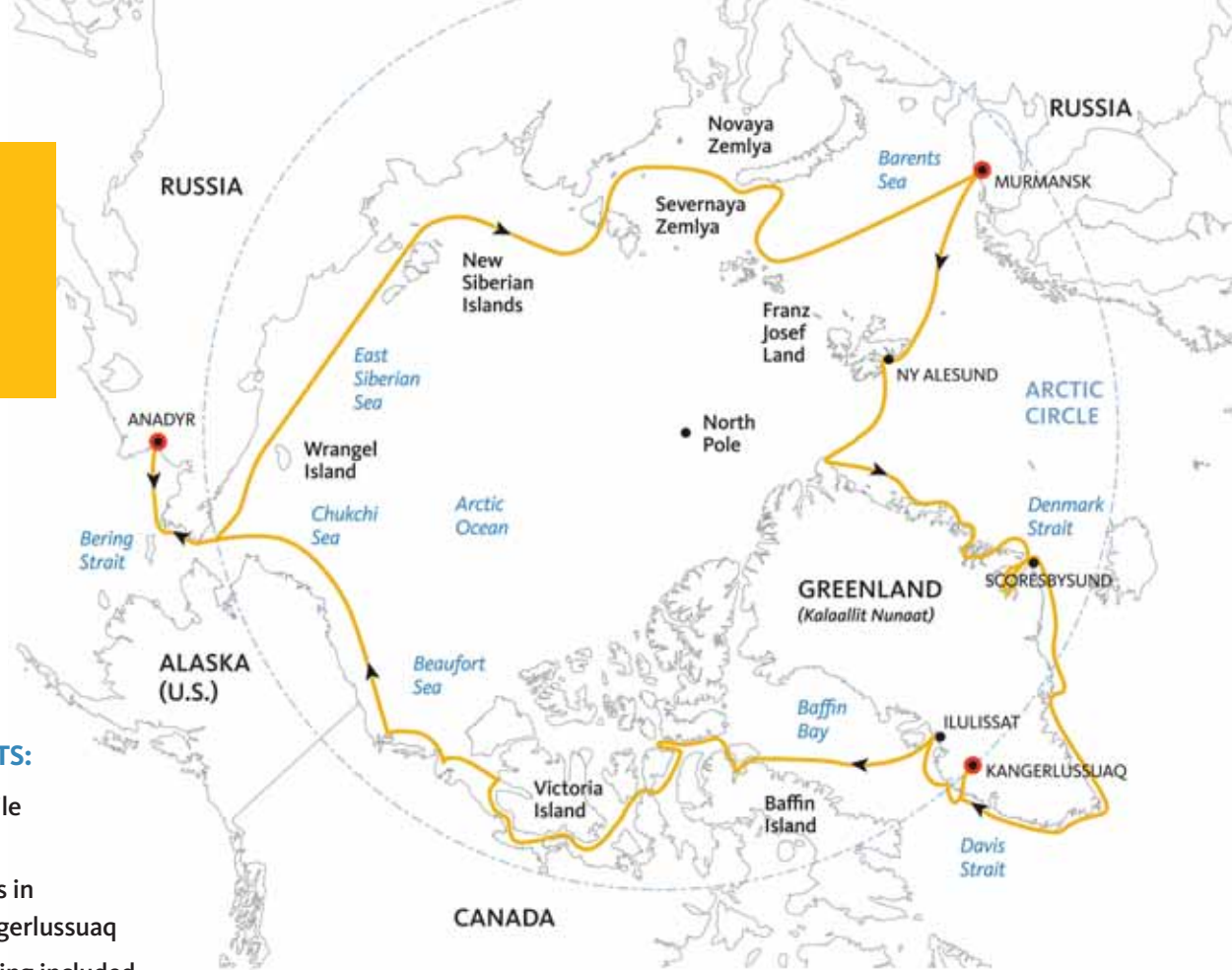


66 days

One departure:
Jul 10, 2011

SHIP: KLB

See page 46 for details



VOYAGE HIGHLIGHTS:

- Circle the globe while circling the Arctic
- Exclusive excursions in Murmansk and Kangerlussuaq
- Helicopter sightseeing included
- End of an Era icebreaker adventure
- Special Guests

Arctic Circumnavigation

One of a Kind and Never to be Repeated

LEFT: Whalebone Alley, the Russian Arctic – eerie and ageless.
RIGHT: An arch of ice: a natural sculpture.

Only 112 people will spend 66 days circling the globe in the most northerly latitudes. This Arctic adventure will never be repeated aboard *Kapitan Khlebnikov*, arguably the most famous expedition icebreaker in history. A singular historic event that should not be missed.

It is possible to join one of three segments of this circumnavigation of the Arctic.

Per person
prices from
\$65,990*

*based on
triple occupancy

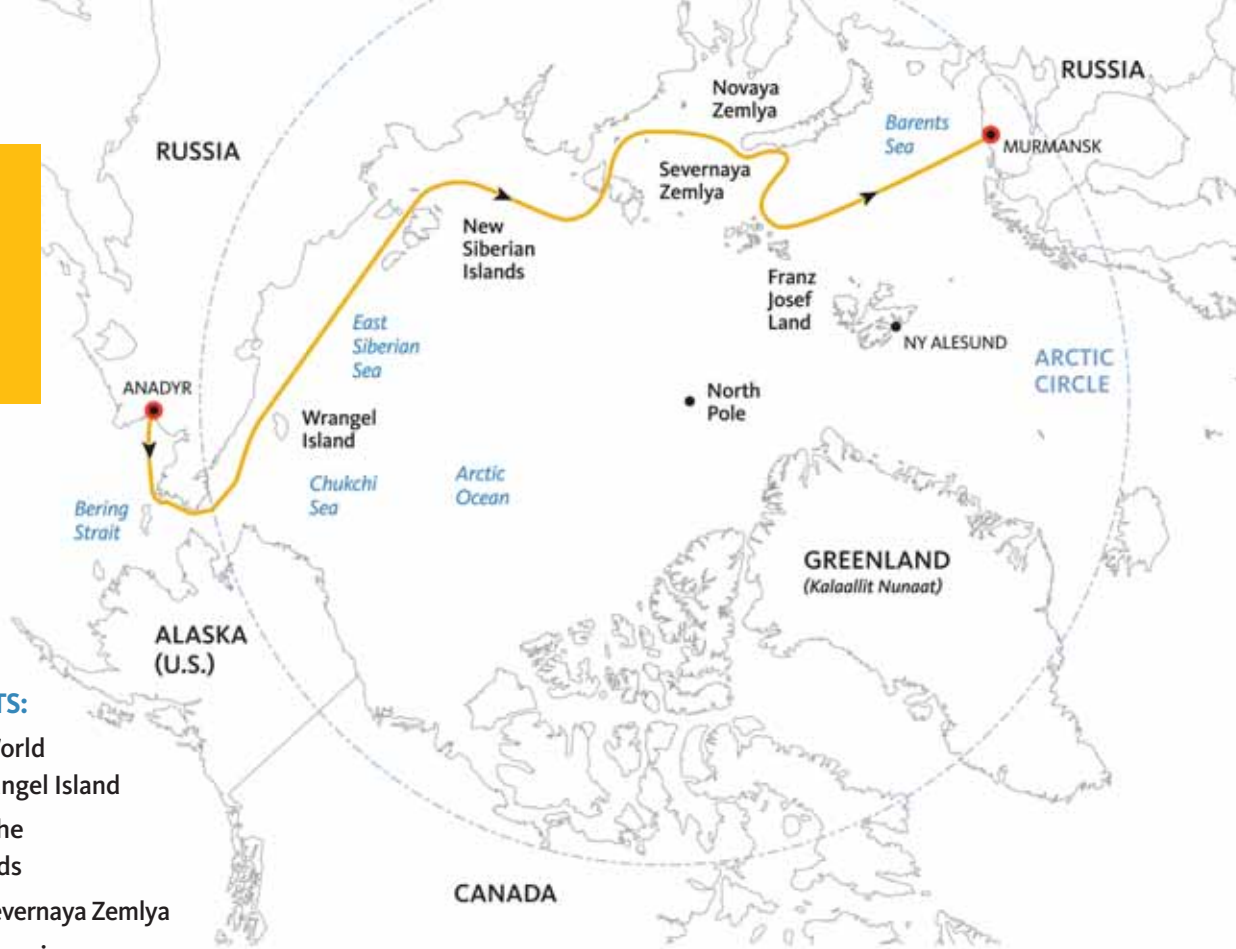


28 days

One departure:
Jul 10, 2011

SHIP: KLB

See page 46 for details



VOYAGE HIGHLIGHTS:

- Visit to UNESCO World Heritage Site – Wrangel Island
- Shore landings in the New Siberian Islands
- Zodiac cruising in Severnaya Zemlya
- Polar bear encounters in Franz Josef Land
- Helicopter sightseeing included
- See walrus and musk oxen in the wild

Northeast Passage

The Siberian and Russian Arctic



LEFT: *Khlebnikov* is equipped with helicopters for aerial sightseeing. RIGHT: Chukotka Peninsula; Russia's Far East is striking and remote.

See Russia's Arctic during a haunting 28-day journey, far from the madding crowd. This 20th anniversary voyage will be the final transit of Russia's Arctic by our conventional icebreaker, *Kapitan Khlebnikov*. Helicopters transfer you to uninhabited islands explored by only a handful of people each year. Discover musk oxen and World Heritage sites. Visit the least known region of the Arctic, and the most fascinating.

Per person prices from
\$27,390*
*based on triple occupancy



21 days

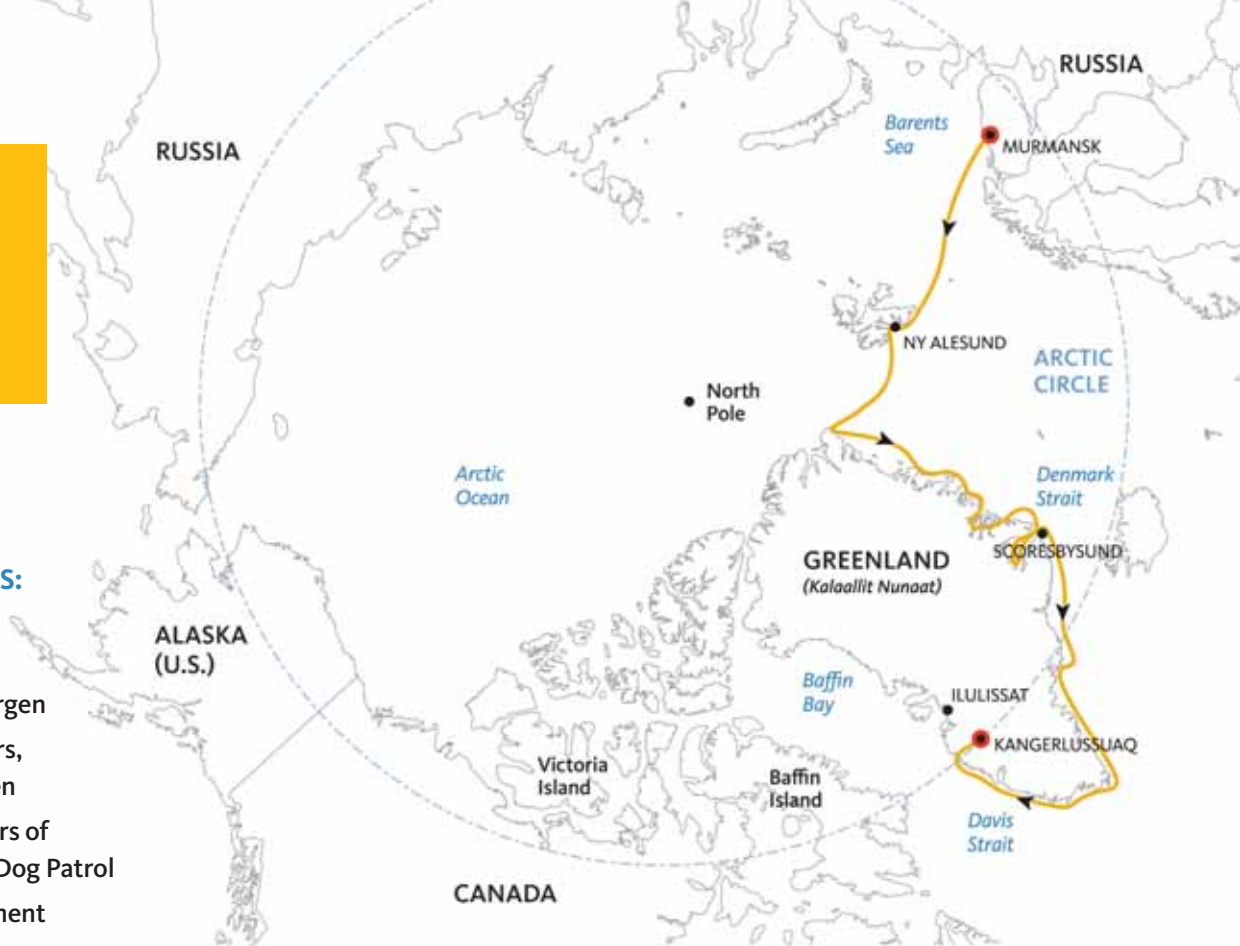
One departure:
Aug 4, 2011

SHIP: KLB

See page 46 for details

VOYAGE HIGHLIGHTS:

- Visit the Arctic research town of Ny Alesund, Spitsbergen
- Encounter polar bears, walrus and musk oxen
- Visit the headquarters of Greenland's SIRIUS Dog Patrol
- Visit a Viking settlement
- Cruise Scoresbysund
- Helicopter sightseeing included
- Special guest: Author Peter Schmidt Mikkelsen, former SIRIUS Dog Patrol member



Greenland Semi-circumnavigation

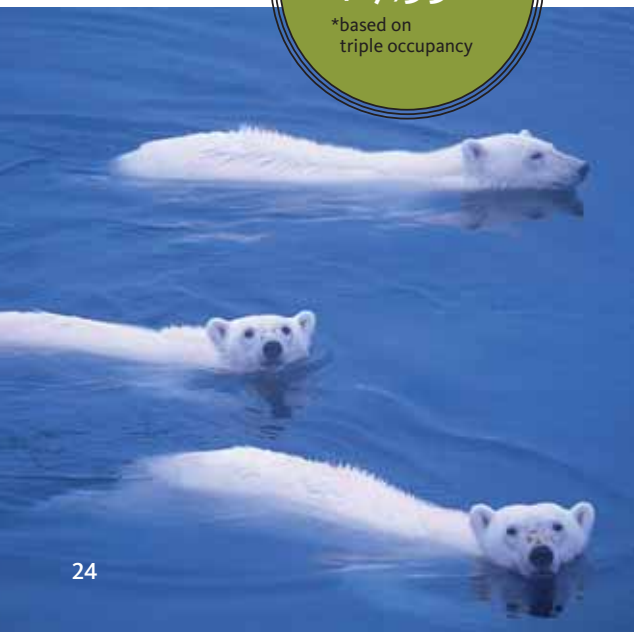
The Final Frontier

LEFT: Polar bears are excellent swimmers.
RIGHT: The sun shines at midnight above the Arctic Circle.

Follow the ice edge where polar bear and walrus hunt. Sail deep into the iceberg alley of the world's largest fjord complex. Listen to Viking sagas and Inuit folklore. Your travel companion is Peter Schmidt Mikkelsen who spent two years on Greenland's eastern shore patrolling with dogs and sled. Experience Greenland's Arctic – the final frontier.

Per person
prices from
\$17,990*

*based on
triple occupancy

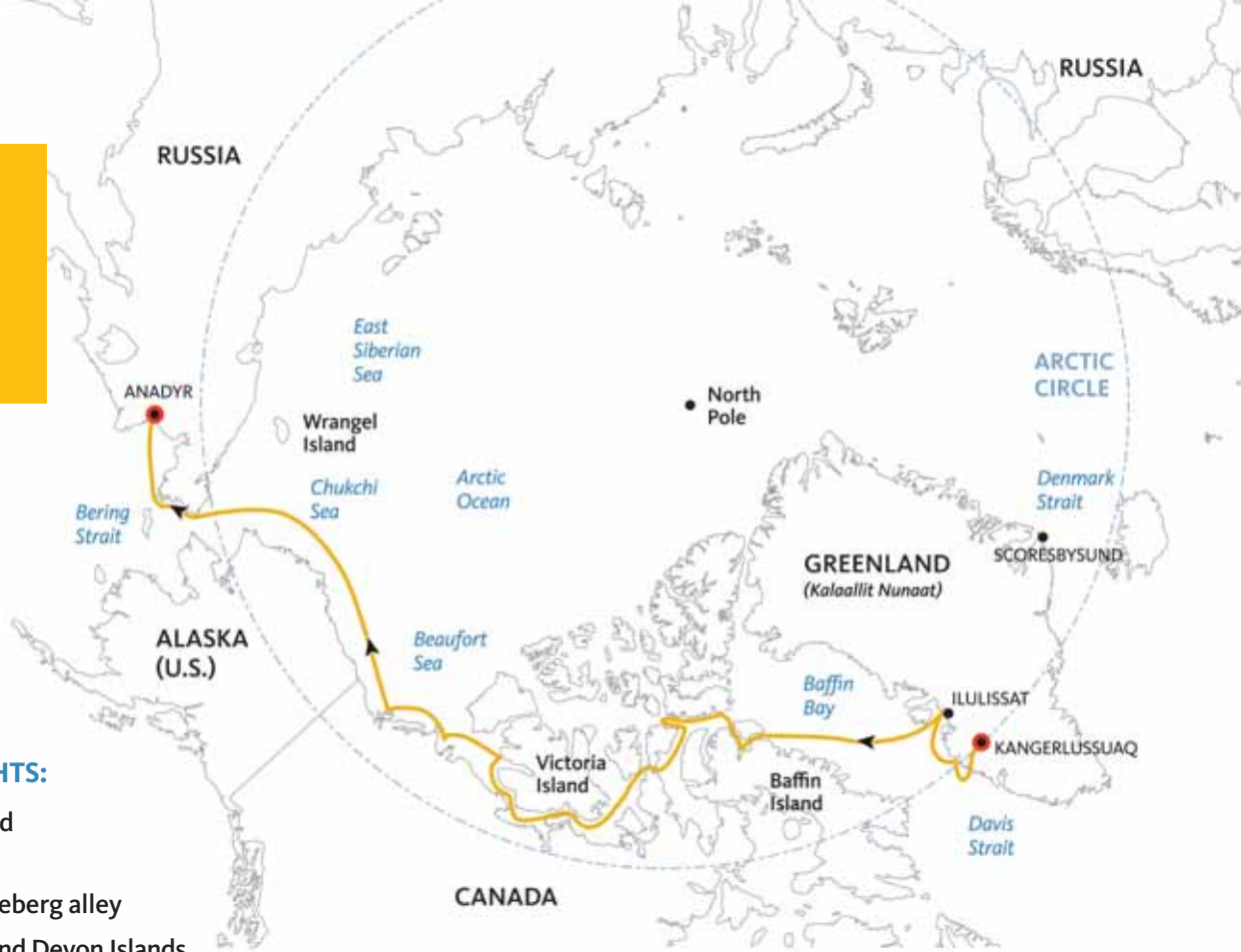


23 days

One departure:
Aug 22, 2011

SHIP: KLB

See page 46 for details



VOYAGE HIGHLIGHTS:

- ➔ Visit Pond Inlet and Cambridge Bay
- ➔ Sail Greenland's iceberg alley
- ➔ Land on Beechey and Devon Islands
- ➔ Transit Bellot Strait
- ➔ Helicopter sightseeing included
- ➔ Special guest: Irish Arctic explorer and filmmaker John Murray

Arctic Passage

End of an Era Transit of Amundsen's Route to Asia

LEFT: An Arctic hare can reach a top speed of 37 mph. RIGHT: Khlebnikov's bow is an excellent observation platform.

Visit sites associated with Arctic explorers Sir John Franklin and Roald Amundsen. Sail Greenland's iceberg alley, and soar over glaciers in helicopters. Immerse yourself in the culture and art of the Inuit. Bid farewell to an extraordinary vessel as she sails the Northwest Passage one last time.

Per person prices from
\$23,290*

*based on triple occupancy



Arctic 2011 Inclusions

Expedition rates for Arctic 2011 include:

ON ALL SHIPS, RATES INCLUDE:

- Shipboard accommodation with daily housekeeping.
- All breakfasts, lunches and dinners on board throughout your voyage. (Please inform us of any dietary requirements as far in advance as possible. Unfortunately, the ships' galleys cannot prepare kosher meals.)
- All shore landings per the daily program.
- Leadership throughout the voyage by our experienced Expedition Leader, including shore landings and other activities.
- All Zodiac transfers and cruising per the daily program.
- Formal and informal presentations by our Expedition Team and Special Guests as scheduled.
- Photographic Journal on DVD, documenting the voyage.
- A pair of waterproof expedition boots on loan for shore landings.
- An official Quark Expeditions parka to keep.
- Coffee, tea and cocoa available around the clock.
- Hair dryer and bathrobe in every cabin.
- Comprehensive pre-departure materials, including a map and an informative Arctic Reader.
- All miscellaneous service taxes and port charges throughout the program.
- All luggage handling aboard ship.
- On disembarkation day, group transfer from the ship to the airport or other local designated drop-off location.
- Emergency Evacuation Insurance for all passengers to a maximum benefit of USD \$100,000 per person
- "No fuel surcharge" guarantee. Prices will not increase regardless of fluctuations in the price of marine fuel.

Repeat customers save 5% on their next Quark voyage

ALSO INCLUDED DURING EXPEDITIONS ON BOARD KAPITAN KHLBNIKOV AND 50 YEARS OF VICTORY:

- All helicopter transfers and aerial sightseeing according to each day's program.
- 1 night pre- and 1 night post-expedition hotel accommodation, including breakfast.
- On embarkation day, group transfer from the host hotel to the airport and from the airport to the ship.
- For the Arctic Circumnavigation voyage only, 6 hours of exclusive group excursions with transportation and lunch in Murmansk and in Sondre Stromfjord (Kangerlussuaq).

ALSO INCLUDED DURING EXPEDITIONS THAT EMBARK AND DISEMBARK IN SVALBARD:

- If arrival is the day prior to embarkation, group transfer to a Longyearbyen hotel, then to the ship on the day of embarkation.
- If arrival is on the day of embarkation, group transfer to the town of Longyearbyen, then an afternoon group transfer from a pre-arranged location to the ship.

ALSO INCLUDED DURING EXPEDITIONS THAT EMBARK IN REYKJAVIK:

- 1 night pre-expedition hotel accommodation in Reykjavik with breakfast, as indicated in the itinerary. (The number of guests per room is the same as cabin occupancy on the ship. Due to limited availability, travelers who reserve a suite on board are accommodated in standard rooms at the hotel.)
- On embarkation day, group transfer from the host hotel to ship.

RATES DO NOT INCLUDE:

- Any airfare. For some departures, economy seats on our charter flights must be purchased in conjunction with the expedition. The applicable per-person cost is indicated on the Dates and Rates summary.
- Passport and visa expenses.
- Government arrival and departure taxes.
- Any meals ashore, with the exception of breakfast at the host hotel before embarkation, when applicable.
- Baggage, cancellation and medical travel insurance.
- Excess baggage charges.
- Laundry, bar, beverage and other personal charges.
- Telecommunications charges.
- The voluntary gratuity at the end of the voyage for shipboard staff and crew.
- On icebreakers, any excess helicopter flying time that may be available for private flights can be purchased at an hourly rate to be announced on board.

Essential Extras

We call them essential extras, but you may call them absolute necessities: flights from home to the ship, or a stopover en route to our ship. You've always dreamed of exploring Buenos Aires or Oslo. Why not make the dream come true?

LONGYEARBYEN STOPOVER

Want to add kayaking to your Spitsbergen adventure, but you don't have the needed experience? Book our Longyearbyen Stopover package. It includes a half a day of kayaking that qualifies you for our Spitsbergen adventure option.

Price per person from: \$75



OSLO – VIKINGS AND EXPLORERS

Vikings were extraordinary seamen and explorers, settling in North America long before Columbus arrived. Centuries later two of the finest Arctic explorers ever to ski or sledge an icefield – Fridtjof Nansen and Roald Amundsen – made their Viking ancestors proud. Extend your stay in Oslo, before traveling to Longyearbyen, to see two extraordinary vessels – a replica of a Viking ship and Fram, the ship that carried Nansen and Amundsen to greatness.

Price per person from: \$1,330 (based on twin occupancy)



ARGENTINA – WINE COUNTRY OR IGUAZU FALLS

Argentina is an extraordinary country with an abundance of options for extending your Antarctic adventure. Relax in Mendoza, Argentina's wine country, for tastings and learn why the region has an international reputation. Fly to the border of Argentina and Brazil to see Iguazu Falls, a UNESCO World Heritage Site and, some claim, one of the seven natural wonders of the modern world.

Price per person from: \$1,315 for the wine country adventure (based on twin occupancy)

Price per person from: \$460 for the excursion to Iguazu Falls (based on twin occupancy)



HOBART, TASMANIA

Hobart is Australia's gateway to Antarctica and the city most associated with Sir Douglas Mawson. Extend your stay and we'll take you on a city tour that includes visits to places associated with Australia's most renowned Antarctic explorer.

Price per person from: \$2,005 (based on twin occupancy)



FLIGHTS: GETTING THERE AND BACK

We can book flights to Ushuaia, Ottawa, Helsinki, Anchorage, Christchurch or Hobart – the communities where our expeditions begin. And we can get you home again from Perth or Oslo or Reykjavik. We research the best available connections and prices based on your personal requirements.

For the ultimate travel experience, we can arrange private jet transportation from your nearest airport to the embarkation airport.

OPPOSITE PAGE, ABOVE: Iguazu Falls, a UNESCO World Heritage Site.
BELOW LEFT: Longyearbyen, Spitsbergen.
BELOW RIGHT: The historic old town of Bergen, Norway.

Terms and Conditions of Sale

Arctic 2011 & Antarctic 2011-2012

The purchase of any travel services offered by Quark Expeditions, Inc. (hereinafter with its affiliates, owners, officers, agents and employees collectively referred to as "Quark" or "QEI") creates a contractual relationship between QEI and you, the customer/participant in the travel package by QEI and represents your acceptance of the terms and conditions of your travel package set out herein (the "Terms and Conditions"). Please read the following information carefully. In order for your tour reservation to be completed, you must indicate your acceptance of the Terms and Conditions by checking the appropriate box when paying your deposit for online reservations, or, for reservations made by telephone, by signing and returning the Acknowledgment Form mailed to you by Quark. You are advised to check on the Quark website located at www.quarkexpeditions.com or to request the latest version of the Terms and Conditions from Quark prior to booking your travel package.

RESERVATIONS AND PAYMENT

Reservations by Telephone

Deposits – To confirm reservations on all Quark products a deposit of 10% (minimum \$1000 per person) is required at time of booking. The deposit may be paid by bank wire transfer, check, money order or major credit card. For any booking within 120 days of departure full payment is required.

Final Payments – Balances are due 120 days prior to departure. Final payment can be made by calling Quark Expeditions and may be paid by bank wire transfer, check, money order or major credit card.

Deposits and payments for Pre- and Post-travel options are specific to each item and are explained and communicated at time of purchase.

Booking Online

Deposits – To confirm reservations on all Quark products a deposit of 10% (minimum \$1000 per person) is required at time of booking. The deposit must be paid by major credit card. For any bookings within 120 days of departure full payment is required.

Final Payments – Balances are due 120 days prior to departure. Final payment can be made by calling Quark Expeditions and must be paid by major credit card.

Deposits and payments for pre-expedition and post-expedition services are specific to each item and are explained and communicated at time of purchase.

Special requests – Quark Expeditions will always try to accommodate special requests, but will not guarantee such things as cabin number, bedding type, special meals and airline seats. Please ensure all special requests are conveyed to your booking agent at time of reservation.

EMERGENCY EVACUATION INSURANCE

Emergency evacuation insurance, to a maximum benefit per paying traveler of \$100,000 USD, is included in the cost of Quark Expeditions voyages from Travelex insurance company. Included coverage is applicable only to travel occurring between the first and last day of program purchased from Quark Expeditions. Additional days of travel prior to the expedition and/or after the expedition purchased from suppliers other than Quark Expeditions are not covered by the included emergency evacuation insurance.

TRAVEL INSURANCE

It is a condition of the booking that you and all members of your party have comprehensive travel insurance coverage. Due to the remoteness of the areas in which we travel, travelers must have a minimum \$50,000 of emergency medical coverage. Quark Expeditions requires proof of coverage prior to embarkation. The travel insurance policy should also cover trip cancellation insurance, trip delay (interruption or after-departure coverage), baggage and repatriation. Quark Expeditions will not be held responsible for delays due to force majeure. Any additional costs accrued will be the responsibility of traveler.

CANCELLATIONS AND REFUNDS

All requests for cancellation must be received in writing. Cancellations received 180 days or more prior to departure, are refunded less an administrative fee of \$750 per person. If cancellation is received between 179 days and 120 days, the deposit is forfeited. If cancellation occurs less than 120 days prior to departure, all payments are forfeited. If full payment has not yet been received, the full penalty will still apply and any unpaid balance

is due immediately. To protect the traveler's investment, we recommend that the traveler obtain adequate trip cancellation insurance.

Cancellations cannot be made online.

Adventure Options

Prices quoted are based on group participation and no refunds will be made for any part of the program in which the traveler chooses not to participate, including any helicopter flying time (if applicable and which, at the discretion of the Captain and Expedition Leader, may or may not be used). It is understood that refunds cannot be made to travelers who do not complete the services for any reason whatsoever.

Pre and Post Travel

Pre- and Post-travel options arranged by Quark Expeditions are refundable up until 120 days prior to departure, minus an administration fee of \$100 per person. Cancellations received less than 120 days before departure are 100% non refundable.

CANCELLATION BY QUARK EXPEDITIONS

Quark Expeditions begins planning our voyages many months in advance of departure. Occasionally, we have to make changes both before and after bookings have been confirmed. Quark reserves the right to cancel any service prior to departure, in which case payment will be refunded without further obligation on our part. Please note that in the event of cancellation Quark Expeditions will not be responsible for the costs of any additional travel arrangements or other items not purchased through Quark Expeditions.

AMENDMENTS TO BOOKINGS

Quark Expeditions will make every effort to assist in changing traveler's reservations, however, changes must be submitted in writing a minimum of 120 days prior to departure. If the amendment is possible it will be subject to a \$100 change fee.

TRANSFERS OF DEPOSITS OR PAYMENTS TO ALTERNATE VOYAGES

Should travelers be unable to take the expedition they originally booked, but would like to travel on an alternate date, it may be possible to transfer deposits or payments from the original booking to the alternate booking, subject to the following conditions.

The new expedition must occur within one year of the original expedition date. A request to transfer must be made in writing to Quark Expeditions more than 120 days prior to the departure of the original voyage. Quark Expeditions reserves the right to prohibit transfers on any of its voyages. Should a transfer request be granted, a fee of \$250 per person will be charged.

MEDICAL FORMS

Medical forms will be sent to booked travelers via e-mail link once the deposit has been received. Travelers must review and complete the forms and then immediately return them. Questions that relate to a traveler's physical or mental suitability must be completed by a medical practitioner. Quark Expeditions cannot offer medical advice. Medical forms must be filled out in full, honestly and accurately, and disclose all medical history and information. Should the traveler's medical situation change after submitting the medical forms, it is the traveler's responsibility to advise Quark Expeditions immediately. Quark Expeditions will review the information submitted, and reserves the right to ask for further information, clarity on information, or for documentation from your medical practitioner. Quark Expeditions reserves the right to deny passage to any traveler on reasonable medical grounds. For travelers that book within 120 days of departure, completed medical forms must be received within 7 days of making payment. Quark Expeditions reserves the right to deny boarding, without refund or resulting expenses, to any traveler at the pier for any reason at its sole discretion, including but not limited to in the event that the on board medical officer determine that the traveler has not disclosed accurate medical information.

ITINERARY

The itinerary described is subject to change at the discretion of the ship's Master and Quark Expeditions' Expedition Leader. This is an expedition to a remote part of the world and Quark Expeditions reserves the right to change the itinerary due to weather conditions, availability of anchorages, political conditions or other factors beyond its control, without consulting the travelers. It is understood that such decisions will be made in the best interests of all travelers

aboard and with regard to the safety of the vessel. Travelers have no right to any refund or other considerations in the event of these itinerary changes. Nothing in this brochure or website is meant to signify the use of any specific design or model of helicopter. The images featured are inspirational in character and do not necessarily depict the exact people, animals and places encountered by travelers. The traveler must be in possession of a valid passport and any visas, permits and certificates that are required for the duration of the services provided by Quark Expeditions and shall arrange such vaccinations as are normally recommended for the countries through which they intend to travel. Information about these matters and climate, clothing, baggage, gear, and similar items is given in good faith but without responsibility on the part of Quark Expeditions.

RATES

All fares are quoted in U.S. dollars (USD). Rates for voyages, flights, as well as optional pre-expedition and post-expedition extensions are based on tariffs and exchange rates in effect at the time of printing and are subject to change prior to departure. Substantial changes in tariffs, exchange rates and the price of fuel, services and labor sometimes increase the cost of expedition arrangements significantly. Quark reserves the right to alter prices or introduce surcharges accordingly, even if payment has been received in full. All travelers are required to pay for their excursion and additional purchases in conjunction with their excursion in the same currency.

SCHEDULED FLIGHTS

For scheduled flights, the fare rules of the airline carrier, including payment and cancellation conditions apply.

COMPENSATION

Compensation for personal injury is limited in accordance with the provisions of any applicable International Conventions. These include, for example, in the course of road travel, air travel, rail travel, sea travel, or hotel accommodation and are limited to the provisions of, respectively, the Geneva Convention 1973, the Warsaw Convention as amended by the Hague Protocol 1955, the 1961 Berne Convention, the 1974 Athens Convention and the 1962 Paris Convention.

LIMITATION OF LIABILITY

QEI purchases transportation, hotel accommodations, and other services from various independent suppliers that are not subject to its control. Neither QEI, its affiliates, owners, officers, agents, employees, nor any associate organization shall be held liable for any act, default, injury (including death), loss, expense, damage, deviation, delay, curtailment or inconvenience caused to or suffered by any person or their property, howsoever arising, which may occur or be incurred by any organization or person, even though such act, default, injury, loss, expense, damage, deviation, delay, curtailment or inconvenience may have been caused or contributed to: (a) by the act, neglect or default of QEI, or of any persons for whose acts it would otherwise be responsible, or (b) defects or failures of any aircraft, vessel, automotive vehicle or other equipment or instrumentality under the control of independent suppliers. In issuing tickets for transportation of the travel by any means and making arrangements for travel, hotel or other accommodation, QEI is not acting as principal but only as agent for the companies, corporations, owner, public carriers or persons providing or offering the means of transportation and accommodation. You further understand that QEI neither owns nor operates such third party suppliers and accordingly, agree to seek remedies directly and only against those suppliers and not hold QEI responsible for their acts or omissions. In no event will QEI be responsible for incidental, consequential or special damage or loss suffered by any person. QEI's maximum liability, for any reason whatsoever, will be limited to the amount paid to QEI for its services. Without limitation, QEI is not responsible for any acts of God or force majeure, weather emergencies, breakdown, or failure of diving or mechanical equipment, government actions, inclement weather, sickness, attacks by animals, availability of medical care or the adequacy of the same, criminal activity of any kind, terrorism, war, civil disturbance, sanitary conditions, quality or sanitation of food, quarantine, customs, regulations, epidemics, strikes, hotel overbooking, safety and/or security standards at hotels or other accommodations, or for any other reason beyond the control of QEI. You understand, agree with, and agree to be legally bound by the terms of the release and waiver of liability set forth herein.

QEI reserves the right (at their discretion) to alter or omit any part of the itinerary or change any reservation, feature and/or means of conveyance without notice and for any reason whatsoever, without allowance or refund and with extra costs, if any, resulting, said changes being paid by the travelers. We reserve the right to cancel any services prior to departure, in which case payment will be refunded without further obligation on its part. QEI shall not be responsible for any injury to person (whether or not resulting in death) or damage to property arising out of any act of war, insurrection, revolt or other civil uprising or military action occurring in the countries of origin, destination or passage.

In case of a medical problem arising during the voyage, either on board or on shore, which results in costs for evacuation, use of aircraft or repatriation, the responsibility for payment of these costs belongs solely to the traveler if costs incurred are above that of the Emergency Evacuation Insurance.

The traveler contract in use by the carriers concerned (when issued) shall constitute the sole contract between the transportation companies and the purchaser of these services and/or passage. By accepting the ticket, the traveler also agrees to its terms and conditions.

ACKNOWLEDGMENT OF RISK

You understand and acknowledge that your travel in connection with and participation in the tour arranged at your request by QEI may involve risk and potential exposure to injury. You also realize and acknowledge that risk and dangers may be caused by the negligence of the owners, directors, employees, contractors, subcontractors, officers or agents of QEI or the negligence or participation of other participants, contractors and/or subcontractors to QEI. You also recognize and acknowledge that risk and dangers may arise from foreseeable and unforeseeable causes, including weather and other acts of nature. You fully understand and acknowledge that the aforementioned risks, dangers and hazards are a potential in connection with recreational activities which may take place during your journey.

By payment of your deposit, you certify that you do not have any mental, physical or other condition or disability that would create a hazard for yourself or other travelers and you confirm that you are physically and mentally capable of participating in the activity and willingly and knowingly elect to participate in your travel package in spite of the potential risk of danger. By payment of your deposit, you certify that you willingly

and voluntarily assume full responsibility for any injury, loss or damage suffered, whether caused in whole or in part by the negligence of the owners, directors, agents, officers, employees, contractors or subcontractors of QEI. QEI reserves the right to remove a passenger or cancel or withdraw any reservation at any time at its sole discretion.

EXPRESS ASSUMPTION OF RISK AND RESPONSIBILITY/PARTICIPATION

In recognition of the inherent risk of the travels and related activities in which you are intending to engage, you confirm that you are physically and mentally capable of participating in the activity, that you are willingly and knowingly electing to participate in this tour in spite of the potential risk of danger, and you willingly and voluntarily assume full responsibility for any injury, loss or damage suffered by you or caused by you, whether caused in whole or in part by the negligence of the owners, directors, agents, officers, employees, or contractors of QEI. You understand and acknowledge that QEI reserves the right to accept or reject any participant for any reason, and QEI or its guide has the right to disqualify you from any trip activity, if in QEI's or such guide's judgment, you are incapable of that activity and/or your continued participation in the tour will endanger yourself or the safety of the group. It is your responsibility and obligation to inform QEI, at the time your reservation is made, of any medical or physical disability or limitation that might disable you or render you unable to perform or safely complete the tour or any activity on the tour. You further acknowledge that you are the best judge of your own conditions and limitations and that it is incumbent upon you to fully disclose the full extent of any such conditions or limitations to QEI.

RELEASE OF LIABILITY

In consideration of the services and arrangements provided by QEI, you, for yourself and for your heirs, personal representatives or assigns, do hereby release, waive, discharge, hold harmless and agree to indemnify QEI, and its owners, officers, directors, employees and affiliates from any and all claims, actions, or losses for bodily injury, property damage, wrongful death, loss of services, lost profits, consequential, exemplary, indirect or punitive damages or otherwise which may arise out of or occur during your travel in connection with the scheduled travel package and any activities conducted in conjunction therewith.

You specifically understand and agree that you are releasing, discharging and waiving any claims or actions that you may have presently or in the future for the negligent acts or conduct of the owners, directors, officers, employees, agents or affiliates of QEI.

EXPRESS WAIVER OF CONSEQUENTIAL, PUNITIVE OR EXEMPLARY DAMAGES

Regardless of the situation or circumstances giving rise to a claim, you waive any right to seek consequential, punitive or exemplary damages against QEI its owners, officers, directors, agents, contractors and employees, for any reason whatsoever.

ARBITRATION

Any controversy or claim arising out of or relating to these Terms and Conditions or the performance there under, including without limitation any claim related to bodily injury, property damage or death, shall be settled by binding arbitration in Atlanta, GA, USA in accordance with the rules of the American Arbitration Association then existing, and judgment on the arbitration award may be entered in any court having jurisdiction over the subject matter of the controversy. This agreement to arbitrate does not waive or modify the liability release contained in this document. Such proceedings will be governed by substantive Delaware law. The dispute will be resolved by a single arbitrator who must be a lawyer admitted to practice in the courts of at least one state in the United States and have a minimum of fifteen years of experience in civil litigation. The arbitrator so described will be selected by the American Arbitration Association. Each party to the dispute shall have the right on a single occasion to veto the designation of an arbitrator so selected. There will be judicial review of the arbitrator's decision if either side can show plain error in the application of law or be able to show an abuse of discretion with respect to factual findings. The parties waive the right to rely on any state law or statute which creates an exception to enforcement of the requirement that disputes be resolved pursuant to arbitration in the manner set forth herein.

EXCLUSIVE GOVERNING LAW AND JURISDICTION

These Terms and Conditions and any actions and proceeding brought hereunder shall be governed by the laws of the State of Delaware without regard to conflict of laws principles. If the right to seek arbitration is

for any reason waived by both parties, or if judicial review of any arbitration decision is sought, any action or legal proceeding to enforce any provision hereof, or based on any right arising out of, these Terms and Conditions shall be exclusively in the courts of the State of Delaware, or if it has or can acquire jurisdiction, in the United States District Court for the District of Delaware, and all of the parties hereto hereby consent to the exclusive jurisdiction of such courts and of the appropriate appellate courts in any such action or legal proceeding and waive any objection to venue or jurisdiction in connection therewith.

WAIVER OF JURY TRIAL

In connection with any action or legal proceeding arising out of this agreement, the parties hereby specifically and knowingly waive any rights that either party might have to demand a jury trial.

USE OF LIKENESS

Travelers extend Quark Expeditions permission to take their photograph during the voyage, and release all rights over those images understand and consent that QEI may use any likeness taken of you and any of your comments while on your tour for future publicity and promotional material. Travelers who do not wish to be photographed during the voyage must inform Quark Expeditions in writing prior to the voyage.

ANTARCTICA FLY AND CRUISE PROGRAM

QEI acts only as the sales agent for the Antarctica Fly and Cruise Program available on this website or in the QEI brochure (the "Antarctica Fly and Cruise Program"). The Antarctica Fly and Cruise Program is operated by Antarctica XXI and is governed by terms and conditions which can be found on Antarctica XXI's website at <http://antarcticaxxi.com>, or can be requested by contacting Antarctica XXI directly at 1.877.994.2994.

IMPORTANT – PLEASE READ: QEI accepts bookings for the Antarctica Fly and Cruise Program on behalf of Antarctica XXI and the customer on the condition that neither QEI nor its affiliates, owners, officers, agents,

employees, nor any associate organization shall be held liable for any act, default, injury (including death), loss, expense, damage, deviation, delay, curtailment or inconvenience caused to or suffered by any person or their property, howsoever arising, which may occur or be incurred by any organization or person, even though such act, default, injury, loss, expense, damage, deviation, delay, curtailment or inconvenience may have been caused or contributed to: (a) by the act, neglect or default of QEI, or of any persons for whose acts it would otherwise be responsible, or (b) defects or failures of any aircraft, vessel or other equipment or instrumentality under the control of independent suppliers, including, but not limited to Antarctica XXI.

For the Contingency Plan for the Antarctica Fly and Cruise Program In Case of Weather Delays please visit www.quarkexpeditions.com

GENERAL BOOKING TERMS

The following booking terms will apply in case of a regular booking, both for individuals and groups; in case of a charter (booking of the entire voyage and vessel) specific booking terms will have to be negotiated and agreed upon.

- A Booking Fee (\$1500 per person) should be paid to confirm a booking made 120 days prior to the departure date or earlier.
- The total amount of the cost should be paid no later than 120 days before the date departure. Failure to do so will liberate the booking for sale to another passenger.
- If a reservation is made after 120 days prior to the departure date, the total cost of the voyage.
- The Participation Form duly filled and signed by the passenger should be received by ANTARCTICA XXI no later than 60 days prior to departure date.
- The payment of a deposit of any part or full payment for a reservation on this tour shall constitute consent to all the provisions contained herein.

PAYMENT, CANCELLATION, AND REFUND POLICIES

The following payment, cancellation and refund policy will apply in case of a regular booking; in case of a charter (booking of the entire voyage and vessel) specific payment, cancellation and refund terms will have to be negotiated and agreed upon.

Once the Booking Fee is received, the outstanding payment should be paid in full no later than 120 days prior to departure. Failure to do so will liberate the booking for sale to another passenger and the booking fee will not be refunded.

In case of cancellation, which must be done in writing by the passenger, the following terms will apply:

- Cancellation made up to 120 days prior to departure: there will be a full refund of the expedition or program cost less 55% of the Booking Fee.
- Cancellation made between 120 days and up to 60 days prior to departure: there will be a refund of 75% of the total cost of the voyage (per person).
- Cancellation made between 60 days and up to 30 days prior to departure: there will be a refund of 45% of the total cost of the voyage (per person).

Cancellation received after 30 days prior to departure: there will be no refund whatsoever.

IMPORTANT – PLEASE READ:

Your purchase is subject to your acceptance of these Terms and Conditions. IF YOU DO NOT AGREE TO THE TERMS AND CONDITIONS YOU WILL NOT BE ABLE TO PARTICIPATE IN YOUR TOUR.

This brochure is printed on Productolth paper manufactured by NewPage in the U.S.A. It contains a minimum of 30% post-consumer recycled fiber (PCWF); is Elemental Chlorine Free (ECF); 68% of energy used in its manufacturing was generated using renewable biomass energy and ensures the responsible use of forest resources by being tri-certified:

Forest Stewardship Council (FSC) certified
Sustainable Forest Initiative (SFI) certified
Program for the Endorsement of Forest Certification (PEFC) certified

Environmental Impact Statement:

Trees Preserved: 85
Net Energy: 26 million BTU's less
Greenhouse Gases: 8,048 lbs. CO₂ equivalent less
Wastewater: 38,764 gallons less
Solid Waste: 2,353 lbs. less

Environmental Impact estimates were made using the Environmental Defense Fund Paper Calculator. For more information visit: <http://papercalculator.org>

Project POTICO – Restoring Balance to the Global Ecosystems

Project POTICO (Palm Oil, Timber, Carbon Offset) is a bold initiative fully funded by NewPage in support of the World Resources Institute's sustainable forestry initiatives to preserve endangered virgin rainforests in Indonesia. To learn more visit <http://www.projectpotico.org>



Restoring Sustainable Forests in Indonesia
A NEW AND SUSTAINABLE PARTNERSHIP

QUARK EXPEDITIONS 2011-2012 PHOTO CREDITS:

Rene Andersen: P 35 • Tom Arban: Cover, P 20, 23, 35, 41, 42, 43, 52 • Alex Benwell: P 31 • David Blancard: P 22
Steve Bloom: P 44 • Borealis: P 50 • Prisca Campbell: P 42 • Olle Carlsson: P 14, 17, 18 • Helga Dankkaart: P 2 • Larry Darby: P 14
Laura Darby: P 8 • Juan Carlos Espinoza: P 16 • Robert Gloor: P 26, 27 • Paul Goldstein: P 24 • Keith Gunnar: P 28, 36, 38, 50
Kallpa Tours: P 50 • Alexander Kutskiy: P 12, 23 • Dan Leeth: P 38 • David McEown: P 36, 37 • Chris Miller: P 53
Caroline Modolo: P 6, 43 • Finn O'Hara, suginostudio.com: P 1, 8, 9, 10, 15, 16, 17, 18, 19, 21, 24, 46 • John Rodsted: P 41
Matthew Ross: P 14, 15, 50, 51 • Milton Sams: P 4, 9, 30, 31, 32 • Jamie Scarrow: P 30, 33 • Richard Sidey: P 20, 21, 22, 25, 44
O. Staiger: P 26 • Claudio Suter: P 9, 20, 30, 32, 34, 39 • Scott Waldron: P 50 • John Weller: P 26, 27, 39, 45, 47, 49

Creative: Scott Thornley + Company STCworks.ca Printing: Andora Graphics



ARCTIC 2011 DATES AND RATES - USD

rev:20-Aug-10

Expeditions Aboard the Icebreaker 50 YEARS OF VICTORY

Voyage name	Tour Dates (incl. pre/post-expedition hotel night)	Days	Gateway	Embark	Disembark	Twin	Mini Suite	Suite	Victory	Arktika	Charter Flight	Notes
North Pole	June 23 - July 7, 2011	15	Helsinki	Murmansk	Murmansk	\$22,690	\$25,290	\$31,390	\$32,390	\$33,390	\$1,690	

Expeditions Aboard the Icebreaker KAPITAN KHLEBNIKOV

Voyage name	Tour Dates (incl. pre/post-cruise hotel night)	Days	Gateway	Embark	Disembark	Triple	Twin	Suite	Corner Suite	Charter Flight	Notes
Circumnavigation of the Arctic	July 10 - Sept 13, 2011	66	Anchorage	Anadyr	Anadyr	\$65,990	\$88,990	\$99,990	\$113,990	\$1,290	
Northeast Passage: Siberia and the Russian Arctic	July 10 - Aug 6, 2011	28	Anchorage/Helsinki	Anadyr	Murmansk	\$27,390	\$36,690	\$41,590	\$46,990	\$1,690	
Greenland Semi-Circumnavigation: The Final Frontier	Aug 4 - Aug 24, 2011	21	Helsinki/Ottawa	Murmansk	Sondre Stromfjord	\$17,990	\$24,990	\$28,290	\$31,990	\$1,690	Special Guest: Peter Schmidt Mikkelson
Arctic Passage: Amundsen's Route to Asia	Aug 22 - Sept 13, 2011	23	Ottawa/Anchorage	Sondre Stromfjord	Anadyr	\$23,290	\$31,290	\$35,590	\$39,890	\$1,690	Special Guest John Murray

Expeditions Aboard the Adventure Ship SERGEY VAVILOV

Voyage name	Tour Dates	Days	Gateway	Embark	Disembark	Triple	Twin Shared Facilities	Twin Semi-Private Facilities	Twin Private Facilities	Superior	Suite	Cook Suite	Notes
Introduction to Spitsbergen: 8 days in the Arctic	June 9 - June 16, 2011	8	Longyearbyen	Longyearbyen	Longyearbyen	\$2,690	\$3,790	\$4,190	\$4,590	\$4,990	\$5,190	\$5,690	
Spitsbergen Explorer: 11 days in the Arctic	June 16 - June 26, 2011	11	Longyearbyen	Longyearbyen	Longyearbyen	\$3,890	\$5,390	\$5,990	\$6,590	\$7,190	\$7,490	\$8,190	Voyage Chartered
Spitsbergen Explorer: 11 days in the Arctic ^	June 26 - July 6, 2011	11	Longyearbyen	Longyearbyen	Longyearbyen	\$4,490	\$5,890	\$6,390	\$6,890	\$7,390	\$7,690	\$8,390	
Spitsbergen Explorer: 11 days in the Arctic ^	July 6 - July 16, 2011	11	Longyearbyen	Longyearbyen	Longyearbyen	\$4,490	\$5,890	\$6,390	\$6,890	\$7,390	\$7,690	\$8,390	
Spitsbergen Explorer: 11 days in the Arctic	July 16 - July 26, 2011	11	Longyearbyen	Longyearbyen	Longyearbyen	\$4,490	\$5,890	\$6,390	\$6,890	\$7,390	\$7,690	\$8,390	Voyage Chartered
Spitsbergen in Depth: 14 days in the Arctic	July 26 - Aug 8, 2011	14	Longyearbyen	Longyearbyen	Longyearbyen	\$5,790	\$7,690	\$8,290	\$8,990	\$9,590	\$9,990	\$10,890	
Spitsbergen, Greenland & Iceland	Aug 8 - Aug 21, 2011	14	Longyearbyen/Reykjavik	Longyearbyen	Reykjavik	\$4,990	\$6,990	\$7,390	\$7,890	\$8,390	\$8,790	\$9,490	Charter Requested
Iceland, Greenland & Spitsbergen ^	Aug 20 - Sept 3, 2011	14	Reykjavik/Longyearbyen	Reykjavik	Longyearbyen	\$4,790	\$6,790	\$7,190	\$7,590	\$7,990	\$8,490	\$8,990	

^ with option for kayaking
 ~ with option for kayaking and camping
 * includes a pre-expedition hotel night

Expeditions Aboard the Adventure Ship AKADEMIK IOFFE

Voyage name	Tour Dates	Days	Gateway	Embark	Disembark	Triple	Twin Shared Facilities	Twin Private Facilities	Semi Private Facilities	Twin Private Facilities	Superior	Suite	Cook Suite	Notes
Introduction to Spitsbergen: 8 days in the Arctic ^	June 7 - June 14, 2011	8	Longyearbyen	Longyearbyen	Longyearbyen	\$2,690	\$3,790	\$4,190	\$4,590	\$4,990	\$5,190	\$5,690		
Spitsbergen Explorer: 11 days in the Arctic ^	June 14 - June 24, 2011	11	Longyearbyen	Longyearbyen	Longyearbyen	\$3,890	\$5,390	\$5,990	\$6,590	\$7,190	\$7,490	\$8,190		
Spitsbergen Explorer: 11 days in the Arctic ^	June 24 - July 4, 2011	11	Longyearbyen	Longyearbyen	Longyearbyen	\$4,490	\$5,890	\$6,390	\$6,890	\$7,390	\$7,690	\$8,390		
Spitsbergen in Depth: 14 days in the Arctic ^	July 4 - July 17, 2011	14	Longyearbyen	Longyearbyen	Longyearbyen	\$5,790	\$7,690	\$8,290	\$8,990	\$9,590	\$9,990	\$10,890		
Spitsbergen Explorer: 11 days in the Arctic ^	July 17 - July 27, 2011	11	Longyearbyen	Longyearbyen	Longyearbyen	\$4,490	\$5,890	\$6,390	\$6,890	\$7,390	\$7,690	\$8,390		
Spitsbergen in Depth: 14 days in the Arctic ^	July 27 - Aug 9, 2011	14	Longyearbyen	Longyearbyen	Longyearbyen	\$5,790	\$7,690	\$8,290	\$8,990	\$9,590	\$9,990	\$10,890		
Spitsbergen, Greenland & Iceland ^	Aug 9 - Aug 22, 2011	14	Longyearbyen	Longyearbyen	Reykjavik	\$4,990	\$6,990	\$7,390	\$7,890	\$8,390	\$8,790	\$9,490		

PLEASE NOTE: Operation of the Akademik Ioffe voyages featured above is subject to confirmation, which will come latest January 2011. Until operation of these voyages is confirmed, reservations cannot be accepted.

Note: When booking flights in conjunction with one of these expeditions, please ensure that sufficient time is allowed to transfer from the airport to the package start location and from the package end location to the airport for the homeward-bound flight. Please take into account the possibility of delays. For example, for voyages starting in Longyearbyen clients should plan to arrive the day before embarkation or, at the latest, in the morning of embarkation day. For voyages ending in Longyearbyen, clients should not book on homeward-bound flights scheduled to depart before 12 noon on disembarkation day.

Adventure Options

Kayaking
 \$525 p/person

Camping
 \$225 p/person

Extra Hotel Nights On Request

City	Hotel	Rate p/room	Included Meals	Additional Info	Hotel Information
Ottawa	Chateau Laurier	\$274 twn - \$240 sgl \$345 trpl	Full breakfast	\$180 sgl supplement for group night	http://www.fairmont.com/LAURIER
Anchorage	Hilton Anchorage	\$298 twn - \$266 sgl \$348 trpl	Full breakfast	\$186 sgl supplement for group night	http://www.millenniumhotels.com/millenniumanchorage/index.html
Helsinki	Crowne Plaza	\$188 twn - \$170 sgl \$258 trpl	Buffet breakfast	\$130 sgl supplement for group night	http://www.crowneplaza-helsinki.fi
Reykjavik	Radisson Blu Saga	\$264 twn - \$240 sgl \$330 trpl	Buffet breakfast	\$190 sgl supplement for group night	http://www.radissonblu.com/saahotel-reykjavik
Longyearbyen	Radisson Blu Polar	\$304 twn/sgl \$360 trpl	Buffet breakfast		http://www.radissonblu.com/hotel-spitsbergen
Oslo	Rica Gardemoen Oslo airport Thon Hotel Opera Hotel Continental	\$188 twn/sgl \$230 twn/sgl \$270 twn/sgl	Buffet breakfast Buffet breakfast Buffet breakfast		

Extra hotel nights are available on request in conjunction with a Quark voyage.
 Rates are net and non-commissionable.

Transfers On Request

City	Transfer	Rate	Additional Info
Anchorage	Airport to Hotel		Complimentary shuttle service
Helsinki	Airport to Hotel Hotel to Airport	\$150 \$150	
Reykjavik	Keflavik airport to Hotel Hotel to Keflavik airport	\$180 \$180	
Longyearbyen	Airport to Hotel Hotel to Airport	\$66 - Mon-Thurs \$66 - Mon-Thurs	\$110 Fri - Sun \$110 Fri - Sun
Oslo	Airport to Hotel Hotel to Airport	\$360 \$360	

All transfers are private.
 Rates are per car and include up to 3 passengers per car.
 Rates are net and non-commissionable.

ORIGINAL-KATALOG-ANFORDERUNG

Sehr geehrte Reise-Interessenten. Vielen Dank für Ihr Interesse und den Download eines digitalen Kataloges im pdf-Format aus unserem Programm.

Gerne senden wir Ihnen zusätzlich bei weitergehendem Interesse den entsprechenden vollständigen Original-Katalog als gedruckte Version auf dem Postweg.

Bitte nennen Sie unten den gewünschten Katalog und senden Sie dieses Formular per Post oder Fax an uns zurück.

Bitte senden Sie mir den aktuellen Original-Katalog für folgendes Programm/Schiff:

Bitte senden Sie den ausgewählten Katalog an folgende Adresse:

Vorname + Name:

Telefonnummer

Strasse + Nr.

Faxnummer

PLZ + Wohnort

e-mail-Adresse

Bitte per Post (in Fenster-Umschlag) an:

oder per Fax an 04131-54255

An
POLARADVENTURES
c/o Agentur für Erlebnis-Reisen
Heinrich-Böll-Str. 40

D-21335 Lüneburg

**Individuelle Buchungsanfrage per Fax an 04131-54255 oder per Post an
Polaradventures, Heinrich-Böll-Str. 40, D-21335 Lüneburg, Germany**

Bitte unterbreiten Sie mir ein unverbindliches Angebot für folgende Leistungen:

- Angebot mit Insolvenzversicherung nach deutschem Reiseveranstalterrecht + Preis in EUR
 Direkt-Angebot der ausländischen Reedereien (ausländ. Reiserecht + Preis in USD zum Tageskurs in EUR)

Schiffsname

Reisename/ -Route

Abfahrt von - bis (tt/mm - tt/mm/jj)

Alternative Abfahrt (tt/mm - tt/mm/jj) (falls ausgebucht)

Kabinenkategorie

Alternative Kabinenkategorie (falls ausgebucht)

- Doppelkabine Doppelkabine zur Einzelnutzung Halbe Doppelkabine zur Mitbenutzung

Zubringerflüge:

Abflughafen

Hinflugdatum (tt/mm/jj)

Rückflugdatum (tt/mm/jj)

bevorzugte Airline

- Economy-Class Business-Class

Zusätzliche Hotelübernachtungen:

Hotelname/Übernachtungsort

Aufenthalt von - bis (tt/mm - tt/mm/jj)

Hotelname/Übernachtungsort

Aufenthalt von - bis (tt/mm - tt/mm/jj)

Reiseversicherungen:

- keine
 Reiserücktrittskostenversicherung
 Komplettschutz (Reiserücktritts-, Kranken-, Unfall-, Gepäck- und Notfallversicherung)

Persönliche Angaben:

1. Reiseteilnehmer
 Vorname, Name / Geburtsdatum

2. Reiseteilnehmer
 Vorname, Name / Geburtsdatum

Angebot bitte:

per Email an (Emailadresse)

per Fax an (Nummer)

per Post an (Vorname & Name)
 (Straße & Nr.)

(PLZ & Wohnort)